

Illustrated List of the Butterflies of İzmir Province (Turkey)

Ali Atahan¹ Vildan Bozacı² Demet Çelikkaya³
Orhan Gül⁴ Munir Hançer⁵ Kurtuluş Şimşek⁶

By observations and also using our photography hobby as a supporting tool to this activity, our aim is to find out the recorded butterfly species in İzmir, besides with the unrecorded new ones to enlarge and document our list. For this purpose, the most visited districts in the province are Balçova, Kemalpaşa, and Buca (Table 1, 2). As a result of the field studies that has been accomplished between the years of 2004 and 2008, the number of butterfly species, which was 109 before, was increased to 122 with the addition of new records.

The areas on which the observations done are mostly natural fields. Valleys, forests, scrubs, river sides, forest paths are preferred places.

Generally, the population of species are low, however there are species that can be seen in the city centers, parks, gardens, residential areas and those are indicated in the list.

Observational notes related to the species are attached to the list. Totally 85 records together with the 13 new ones attached to the list, are also presented as photographs together with the necessary recording information.

The newly added species to the butterfly fauna of İzmir Province are as follows;

Böğürtlen Brentisi, *Brenthis daphne* (Fig.19),

Iparhan, *Melitaea cinxia* (Fig.24),

Yırtıkırtık, *Polygonia c-album* (Fig.29),

Mormeşe, *Quercusia quercus* (Fig.55),

Anadolu Devmavisi, *Glaucopsyche (Iolana) lessei* (Fig.57),

Çokgözlü Ormanesmeri, *Polyommatus (Aricia (s.str.)) artaxerxes* (Fig.65d),

Çokgözlü Balkan Mavisi, *Polyommatus (Aricia (Ultraaricia)) anteros* (Fig.66),

Çokgözlü Amanda, *Polyommatus (s.str. (Plebicula)) amandus* (Fig.67),

Bavius, *Rubrapterus bavius* (Fig.70),

Minik Sevbeni, *Satyrium acaciae* (Fig.72),

Büyük Sevbeni, *Satyrium (Nordmannia) ilicis* (Fig.73),

Balkan Kaplani, *Tarucus balkanicus* (Fig.74), and

Orman Zıpızı, *Ochlodes venatus* (Fig.79).

We are grateful to Prof. Dr. Ahmet Ömer Koçak and Dr. Muhabbet Kemal Koçak for their supports and guidance during the preparation of this study.

¹ alamecek@yahoo.com

² vildan.bozaci@gmail.com

³ dcelikkaya@hotmail.com

⁴ bivoorhan@yahoo.com

⁵ munir.hancer@den.edu.tr

⁶ kurtulussimsek@mynet.com

Table 1 - Localities where the observations were made in İzmir Province together with the recorded species of butterflies

Districts	Families							Total number of species
	<i>Papilionidae</i>	<i>Pieridae</i>	<i>Argynniidae</i>	<i>Libytheidae</i>	<i>Satyridae</i>	<i>Lycaenidae</i>	<i>Hesperiidae</i>	
Balçova	<i>Iphiclides podalirius</i> , <i>Papilio machaon</i> , <i>Zerynthia cerisyi</i>	<i>Anthocharis cardamines</i> , <i>Colias crocea</i> , <i>Euchloe ausonia</i> , <i>Gonepteryx cleopatra</i>	<i>Brenthis daphne</i> , <i>Issoria lathonia</i> , <i>Limnitis reducta</i> , <i>Melitaea punica</i> , <i>Nymphalis polychloros</i> , <i>Polygonia egea</i> , <i>Vanessa atalanta</i>		<i>Hipparchia fatua</i> , <i>Hipparchia syriaca</i> , <i>Kirinia roxelana</i> , <i>Lasiommata maera</i> , <i>Maniola telmessia</i> , <i>Maniola jurtina</i> , <i>Pararge aegeria</i> , <i>Pseudochazara anthelea</i>	<i>Lampides boeticus</i> , <i>Lycaena phlaeas</i> , <i>Polyommatus agestis</i> , <i>Polyommatus icarus</i> , <i>Pseudophilotes vicrama</i> , <i>Satyrrium ilicis</i>	<i>Carcharodus alceae</i> , <i>Gegenes pumilio</i> , <i>Pelopidas thrax</i> , <i>Thymelicus sylvestris</i>	33
Balçova/ İnciraltı		<i>Pieris leucosoma</i>	<i>Vanessa atalanta</i>			<i>Lycaena thersamon</i>		
Bayındır					<i>Coenonympha pamphilus</i>	<i>Callophrys rubi</i>		2
Bergama			<i>Vanessa cardui</i> , <i>Melitaea fascelis</i>		<i>Maniola jurtina</i>			5
Bergama/ Akropol			<i>Melitaea didyma</i>			<i>Satyrrium acaciae</i>		
Bornova						<i>Chilades trochylus</i>		2
Bornova/ Çiçekliköy						<i>Glaucopteryx alexis</i>		
Ödemiş/ Bozdağ	<i>Iphiclides podalirius</i>		<i>Argynnis pandora</i> , <i>Melitaea cinxia</i> , <i>Nymphalis polychloros</i> , <i>Polygonia c-album</i>		<i>Arethusana arethusia</i> , <i>Hipparchia statilinus</i> , <i>Hyponephele lupina</i> , <i>Melanargia Larissa</i> , <i>Pseudochazara lydia</i> , <i>Satyrus amasinus</i>	<i>Lampides boeticus</i> , <i>Plebejus modicus</i> , <i>Polyommatus artaxerxes</i> , <i>Polyommatus anteros</i> , <i>Polyommatus amandus</i>	<i>Pyrgus melotis</i>	17
Buca/Kaynaklar		<i>Gonepteryx cleopatra</i> , <i>Leptidea sinapis</i> , <i>Pieris krueperi</i> , <i>Pieris brassicae</i> , <i>Pontia edusa</i>	<i>Vanessa cardui</i> , <i>Issoria lathonia</i> , <i>Limnitis reducta</i> , <i>Melitaea fascelis</i>		<i>Coenonympha pamphilus</i> , <i>Hipparchia aristaeus</i> , <i>Hipparchia mersina</i> , <i>Hyponephele lupina</i> , <i>Maniola telmessia</i> , <i>Pseudochazara anthelea</i>	<i>Celastrina argiolus</i> , <i>Glaucopteryx alexis</i> , <i>Glaucopteryx (Iolana) lessei</i> , <i>Leptotes pirithous</i> , <i>Polyommatus agestis</i> , <i>Polyommatus icarus</i> , <i>Rubrapterus bavius</i> , <i>Satyrrium ilicis</i> , <i>Tarucus balkanicus</i>	<i>Carcharodus orientalis</i> , <i>Carcharodus alceae</i> , <i>Erynnis marloyi</i> , <i>Gegenes pumilio</i>	28
Çeşme/ Alaçatı							<i>Gegenes pumilio</i>	2
Çeşme/Ildırı						<i>Callophrys rubi</i>		
Çiğli/Gediz Deltası		<i>Euchloe ausonia</i>			<i>Lasiommata maera</i> ,		<i>Spialia orbifer</i>	3
Foça	<i>Papilio machaon</i> , <i>Zerynthia cerisyi</i>	<i>Euchloe ausonia</i>						3
Dikili		<i>Pieris leucosoma</i> , <i>Pontia edusa</i>			<i>Coenonympha pamphilus</i> ,	<i>Polyommatus icarus</i>		4
Karaburun		<i>Aporia crataegi</i>				<i>Satyrrium ilicis</i>		2
Kemalpaşa			<i>Issoria lathonia</i>		<i>Kirinia roxelana</i>	<i>Celastrina argiolus</i> , <i>Polyommatus thersites</i>		
Kemalpaşa/Aşağıkızılca	<i>Archon apollinus</i> , <i>Papilio machaon</i>	<i>Pontia chloridice</i>	<i>Argynnis pandora</i> , <i>Polygonia c-album</i>		<i>Melanargia larissa</i> , <i>Pararge aegeria</i> ,	<i>Lycaena thersamon</i>	<i>Carcharodus alceae</i> , <i>Thymelicus sylvestris</i>	

Kemalpaşa / Bağyurdu		<i>Pieris brassicae</i>	<i>Melitaea didyma</i>		<i>Pseudochazara anthelea</i> ,			
Kemalpaşa/Bayramlı							<i>Gegenes pumilio</i>	
Kemalpaşa/Cumalı		<i>Pieris leucosoma</i>						
Kemalpaşa/Dereköy						<i>Satyrium ilicis</i>		
Kemalpaşa/Kamberler			<i>Brenthis daphne</i>		<i>Maniola telmessia</i>	<i>Lycena alciphron</i> , <i>Polyommatus amandus</i>	<i>Spialia orbifer</i>	67
Kemalpaşa / Nazarköy (Kurudere)	<i>Iphiclides podalirius</i>	<i>Anthocharis cardamines</i> , <i>Aporia crataegi</i> , <i>Colias crocea</i> , <i>Euchloe ausonia</i> , <i>Pontia edusa</i>	<i>Charaxes jasius</i> , <i>Melitaea cinxia</i> , <i>Melitaea pumica</i> , <i>Melitaea didyma</i> , <i>Melitaea fascelis</i> , <i>Vanessa atalanta</i>		<i>Hipparchia fatua</i> , <i>Hipparchia syriaca</i> , <i>Lasiommata maera</i> , <i>Maniola telmessia</i>	<i>Callophrys rubi</i> , <i>Glaucopteryx alexis</i> , <i>Lycena thersamon</i> , <i>Polyommatus icarus</i> , <i>Rubrapterus bavius</i> , <i>Tarucus balkanicus</i>	<i>Carcharodus orientalis</i> , <i>Carcharodus alceae</i> , <i>Erynnis marloyi</i> , <i>Gegenes pumilio</i> , <i>Pyrgus melotis</i> , <i>Pyrgus sidae</i> , <i>Thymelicus sylvestris</i>	
Kemalpaşa / Yiğitler	<i>Zerynthia cerisyi</i>	<i>Colias crocea</i> , <i>Pieris brassicae</i>	<i>Argynnis niobe</i> , <i>Argynnis paphia</i> , <i>Libythea celtis</i> ,			<i>Quercusia quercus</i> , <i>Lycena tityrus</i> , <i>Lycena phlaeas</i> , <i>Polyommatus amandus</i>	<i>Ochlodes venatus</i>	
Kemalpaşa / Yukarıkızılca		<i>Leptidea sinapis</i>	<i>Argynnis paphia</i> , <i>Limenitis reducta</i>	<i>Libythea celtis</i>				
Kemalpaşa / Vişneli					<i>Kirinia roxelana</i>			
Merkez		<i>Gonepteryx cleopatra</i>				<i>Lampides boeticus</i> , <i>Leptotes pirithous</i>		3
Menderes / Efemçukuru							<i>Spialia orbifer</i>	1
Narlıdere		<i>Gonepteryx cleopatra</i> , <i>Pieris brassicae</i>						2
Güzelbahçe / Payamlı		<i>Aporia crataegi</i>						1
Seferihisar					<i>Hipparchia fatua</i>			1
Selçuk	<i>Iphiclides podalirius</i>		<i>Danaus chrysippus</i>					2
Kemalpaşa / Bağyurdu		<i>Pieris brassicae</i>	<i>Melitaea didyma</i>		<i>Pseudochazara anthelea</i>			
Tire / Kaplan Dağı			<i>Argynnis paphia</i> , <i>Polygonia c-album</i>		<i>Pararge aegeria</i>			3
Yamanlar / Karşıyaka (?)			<i>Argynnis pandora</i>					1
Urla	<i>Zerynthia cerisyi</i>	<i>Pieris leucosoma</i> , <i>Pieris brassicae</i>	<i>Vanessa cardui</i>		<i>Lasiommata maera</i>		<i>Gegenes pumilio</i>	6

Table 2 – Number of the species photographed according to the families and the districts of İzmir Province

Districts	The number of the species photographed according to the families							Number of the species according to the districts
	<i>Papilionidae</i>	<i>Pieridae</i>	<i>Argynnididae</i>	<i>Libytheidae</i>	<i>Satyridae</i>	<i>Lycaenidae</i>	<i>Hesperiidae</i>	
Balçova	3	4	7		8	6	4	32
Bayındır					1	1		2
Bergama			2		1			3
Bergama/ Akropol			1			1		2
Bornova						1		1
Bornova/ Çiçekliköy						1		1
Bozdağ	1		4		6	5	1	17
Buca/Kaynaklar		5	4		6	9	4	28
Çeşme/Ildırı						1		1
Çeşme/ Alaçatı							1	1
Çiğli/Gediz Deltası		1			1		1	3
Dikili		2			1	1		4
Foça	2	1						3
İnciralti		1	1			1		3
Karaburun		1				1		2
Kemalpaşa			1		1	2		4
Kemalpaşa/Aşağıkızılca	2	1	2		2	1	2	10
Kemalpaşa/ Bağyurdu (Spil Dağı)		1	1		1			3
Kemalpaşa/ Bayramlı,							1	1
Kemalpaşa/Cumalı		1						1
Kemalpaşa/Dereköy						1		1
Kemalpaşa/Kamberler			1		1	2	1	5
Kemalpaşa/Nazarköy(Kurudere)	1	5	6		4	6	7	29
Kemalpaşa/Yukarıkızılca		1	2	1				4
Kemalpaşa/Vişneli					1			1
Menderes/Efemçukuru							1	1
Merkez		1				1		2
Narlıdere		2						2
Payamlı		1						1
Seferihisar					1			1
Selçuk	1		1					2
Tire/Kaplan Dağı			2		1			3
Yamanlar			1					1
Yiğitler (Kemalpaşa)	1	2	3			4		10
Urla	1	2	1		1			5

List of the Butterflies of İzmir

The following list is based upon the checklists by Koçak & Kemal (2006, 2007).⁷ Some recent changes on the taxonomy and nomenclature of the species are briefly explained in the footnotes as editorial notes. Turkish vernacular names of the species are based upon the publications by Koçak & Kemal (2001, 2007).⁸ The species marked with * is new to the fauna of İzmir Province.

Papilionidae

Totally 7 species are known in İzmir Province. Among them, 3 species could not be photographed or observed so far.

1- Yalancıapollo (Fig.1/a-e) *Archon apollinus* (Herbst,1798)

It is observed every year on two places (Balçova, Kemalpaşa) fields. Number of individuals on the fields are few.

2- Erik Kırlangıçkuyruğu (Fig.2/a-d) *Iphiclides podalirius* (Linnaeus,1758)⁹

Number of individuals on the observation places (Balçova, Bozdağ, Kemalpaşa and Selçuk) are few. It is observed on the residential areas, parks, and gardens.

3- Kaplan Kırlangıçkuyruk *Papilio (s.str. (Alexanoria)) alexanor* Esper,[1800]

It is not observed in the studying areas.

4- Kırlangıçkuyruk (Fig.3/a-d) *Papilio (s.str.) machaon* Linnaeus,1758

Number of individuals on the observation places (Balçova, Kemalpaşa Aşağıkızılca, and Foça) are few. It is observed on residential areas, parks, and gardens.

5- Dumanlıapollo *Parnassius (Driopa) mnemosyne* (Linnaeus, 1758)

⁷ Koçak,A.Ö. & M.Kemal, 2006, Checklist of the *Lepidoptera* of Turkey. *Cent. ent. Stud., Priamus Suppl.* 1: 1-196.

Koçak,A.Ö. & M.Kemal, 2007, Revised and Annotated Checklist of the *Lepidoptera* of Turkey. *Cent. Ent. Stud., Priamus Suppl.* 8: 1-150, 2 Tables.

⁸ Koçak,A.Ö. & M.Kemal, 2001, Türkiye keleklerinin anadillerdeki isimlerinin listesi. *Cent. ent. Stud., Misc. Pap.* 72/73: 1-15.

Kemal,M. & A.Ö.Koçak, 2007, Revised and Expanded List of the Vernacular Names of the *Lepidoptera* in Turkish Language. *Cent. Ent. Stud., Priamus* 12 (4): 95-125

⁹ the name *smyrnensis* was proposed by Eimer,1889, currently considered as junior synonym of *Iphiclides podalirius* (Linnaeus,1758) (Editorial).

It is not observed in the studying areas.

6- Apollo *Parnassius (s.str.) apollo* (Linnaeus,1758)

It is not observed in the studying areas.

7- Ormanfistosu (Fig.4/a-d) *Zerynthia (Allancastris) cerisyi* (Godart,1822)

Number of individuals on observation fields are few.

Pieridae

Totally 19 species are known in İzmir Province. Among them, 8 species could not be photographed or observed so far.

8- Turuncusüslü (Fig.5/a-c) *Anthocharis cardamines* (Linnaeus,1758)

Number of individuals on observation fields are few.

9- Süslüdamone *Anthocharis damone* Boisduval,1836

It is not observed in the studying areas.

10- Stepsüslüsü *Anthocharis gruneri* Herrich-Schäffer,[1851]¹⁰

It is not observed in the studying areas.

11- Alıçbeyazı (Fig.6/a-c) *Aporia (s.str.) crataegi* (Linnaeus,1758)

It is observed that the number of individuals are many on one field. Observed number of individuals are few on other fields.

12- Sarıazamet (Fig.7/a-c) *Colias (Eriocolias) crocea* (Fourcroy,1785)

Number of individuals on observation fields are few. It is observed on residential areas, parks, gardens.

13- Güzel Azamet, Güzel Türkistan Azameti *Colias (s.str.) alfacariensis* Ribbe,1905¹¹

It is not observed in the studying areas.

14- Dağ Oyklösü (Fig.8/a-d)

¹⁰ The subspecies *parmassia* Bernardi,1970 is known from Manisa Province. Possibly, this taxon may also be found in İzmir (Editorial)

¹¹ Recently this name, *alfacariensis* Ribbe is proposed conservation to the ICZN (Grieshuber et al.,2006, Bull. zool. Nomencl. 63 (2): 106-113) (Editorial).

Euchloe (s.str.) ausonia (Hübner,[1804])

Number of individuals on observation fields are few.

15- Kleopatra (Fig.9/a-d)

Gonepteryx (Isogonepteryx) cleopatra
(Linnaeus,1767)

Number of individuals on observation fields are few.
It is observed on residential areas, parks, gardens.

16- Anadolu Orakkanadı

Gonepteryx (s.str.) farinosa (Zeller,1847)

It is not observed in the studying areas.

17- Orakkanat

Gonepteryx (s.str.) rhamni (Linnaeus,1758)

It is not observed in the studying areas.

18- Doğulu Narinormanbeyazı

Leptidea duponcheli (Staudinger,1871)

It is not observed in the studying areas.

19- Narinormanbeyazı (Fig.10/a-b)

Leptidea sinapis (Linnaeus,1758)

Number of individuals on observation fields are few.

20- Krüper'in Beyazmeleği (Fig.11/a-b)

Pieris (Artogeia) krueperi Staudinger,1860

Few number of individuals are observed only on a single field, at two different time.

21- Beyrut Beyazmeleği (Fig.12/a-d)

Pieris (Artogeia) leucosoma Schawerda,1905¹²

Number of individuals on observation fields are few.
It is observed on residential areas, parks, gardens.

22- Mann'ın Beyazmeleği

Pieris (Artogeia) mannii (Mayer,1851)

It is not observed in the studying areas.

23- Yalancı Beyazmelek

Pieris (Artogeia) pseudorapae Verity,1908

It is not observed in the studying areas.

24- Büyük Beyazmelek (Fig.13/a-f)

Pieris (s.str.) brassicae (Linnaeus,1758)

Number of individuals on observation fields are few.
It is observed on residential areas, parks, gardens.

25- Küçük Beneklimelek (Fig.14/a)

Pontia chloridice (Hübner,[1813])

Single individual is recorded on only one field.

26- Yeni Beneklimelek (Fig.15/a-d)

Pontia edusa (Fabricius,1777)

Number of individuals on observation fields are few.

Argynnidae (=Nymphalidae)

Totally 18 species are known in İzmir Province.
Among them, 2 species could not be photographed
or observed so far.

27- Küçük Kaplumbağa

Aglais urticae (Linnaeus,1758)

It is not observed in the studying areas.

28- Niyobe (Fig.16/a)

Argynnis (Fabriciana) niobe (Linnaeus,1758)

Single individual is seen on only one field.

29- Bahadır (Fig.17/a-c)

Argynnis (Pandoriana) pandora ([Denis &
Schifferrmüller],1775)

Number of individuals on observation fields are few.

30- Cengaver (Fig.18/a-c)

Argynnis (s.str.) paphia (Linnaeus,1758)

Number of individuals on observation fields are few.

31- Böğürtlen Brentisi (Fig.19/a-b)*

Brenthis daphne (Bergsträsser,1780)

New record! Number of individuals on observation
fields are few.

32- Çift Kuyruklu Paşa (Fig.20/a-b)

Charaxes jasius (Linnaeus,1767)

It is observed as single individual, at different years,
on three different fields.

33- Dikenkelebeği (Fig.21/a-c)

Vanessa (Cynthia) cardui (Linnaeus,1758)

Number of individuals on observation fields are few.
It is observed on residential areas, parks, gardens.

¹² The status of *Pieris rapae* and *P. leucosoma* Schawerda in Turkey are under discussion (Editorial).

34- İspanyol Kraliçesi (Fig.22/a-c)*Issoria lathonia* (Linnaeus,1758)

Number of individuals on observation fields are few.

35- Akdeniz Hanmelikelebeği (Fig.23/a-d)*Limenitis (Azuritis) reducta* Staudinger,1901

Number of individuals on observation fields are few.

36- İparhan (Fig.24/a-c)**Melitaea cinxia* (Linnaeus,1758)

New record! Number of individuals on observation fields are few.

37- Cezayirli İparhan (Fig.25/a-c)*Melitaea (Cinclidia) (phoebe) punica*
Oberthür,1876

Number of individuals on observation fields are few.

38- Benekli İparhan (Fig.26/a-c)*Melitaea (Didymaeformis) didyma*
(Esper,[1779])

Number of individuals on observation fields are few.

39- Güzel İparhan (Fig.27/a-c)*Melitaea (Didymaeformis) fascelis*
(Fabricius,1787)

Number of individuals on observation fields are few.

40- Sarı Bantlı Kadife*Nymphalis antiopa* (Linnaeus,1758)

It is not observed in the studying areas.

41- Karaağaç Nimfalisi (Fig.28/a-c)*Nymphalis polychloros* (Linnaeus,1758)

Number of individuals on observation fields are few.

42- Yırtkırıktık (Fig.29/a-c)**Polygona c-album* (Linnaeus,1758)

New Record! It is observed as single individual, on three different fields.

43- Anadolu Yırtkırıktığı (Fig.30/a)*Polygona (Comma) egea* (Cramer,[1775])¹³

Only single individuals are observed on two different fields.

44- Atalanta (Fig.31/a-c)*Vanessa (s.str.) atalanta* (Linnaeus,1758)

Number of individuals on observation fields are few. It is observed on residential areas, parks, gardens.

Danaidae

It is represented by a single species in Turkey.

45- Sultan (Fig.32/a)*Danaus (Anosia) chrysippus* (Linnaeus,1758)

Single migrating individual is seen on only one field.

Libytheidae

It is represented by a single species in Turkey.

46- Çitlembikkelebeği (Fig.33/a-c)*Libythea (s.str.) celtis* (Laicharting,1782)

Number of individuals on observation fields are few.

Satyridae

Totally 24 species are known in İzmir Province. Among them, 6 species could not be photographed or observed so far.

47- Seyit (Fig.34/a)*Arethusana arethusana* ([Denis & Schiffermüller],1775)

Few individuals are observed on single field.

48- Karamurat*Brintesia circe* (Fabricius,1775)

It is not observed in the studying areas.

49- Cadı*Chazara (s.str.) briseis* (Linnaeus,1764)

It is not observed in the studying areas.

50- Küçük ZıpZıp Perisi (Fig.35/a-c)*Coenonympha (s.str.) pamphilus*
(Linnaeus,1758)

Number of individuals on observation fields are few.

¹³ This species is originally proposed based upon the material collected Constantinople [İstanbul] and Smyrna [İzmir] (Editorial)

51- Anadolu Karameleği (Fig.36/a-c)*Hipparchia (Neohipparchia) fatua*
(Freyer,1844)

It is common on observed fields.

52- Ağaç Karameleği (Fig.37/a)*Hipparchia (Neohipparchia) statilinus*
(Hufnagel,1766)

One individual is observed on a single field.

53- Güney Kızılmeleği (Fig.38/a-b)*Hipparchia (Parahipparchia) aristaeus*
(Bonelli,1826)

Number of individuals on observation fields are few.

54- Mersin Kızılmeleği (Fig.39/a-b)*Hipparchia (Parahipparchia) mersina*
(Staudinger,1871)¹⁴

Number of individuals on observation fields are few.

55- Anadolu Kızılmeleği*Hipparchia (Parahipparchia) pellucida*
(Stauder,1924)

It is not observed in the studying areas.

56- Büyük Karamelek (Fig.40/a-b)*Hipparchia (s.str.) syriaca* (Staudinger,1871)

It is common on observed fields.

57- Esmerperi (Fig.41/a-b)*Hyponephele (s.str.) lupina* (Costa,[1836])

It is observed as single individual on two different fields.

58- Küçük Esmerperi*Hyponephele (s.str.) lycan* (Rottemburg,1775)

It is not observed in the studying areas.

59- Ağaç Esmeri (Fig.42/a-c)*Kirinia (Melike) roxelana* (Cramer,[1777])¹⁵

Number of individuals on observation fields are few.

60- Esmerboncuk (Fig.43/a-b)*Lasiommata maera* (Linnaeus,1758)

One individual is observed on a single field.

61- Küçük Esmerboncuk (Fig.44/a-c)*Lasiommata megera* (Linnaeus,1767)

Number of individuals on observation fields are few.

62- Doğu Çayiresmeri (Fig.45/a-g)*Maniola (Telmessiola) telmessia* (Zeller,1847)

It is common on observed fields.

63- Çayiresmeri (Fig.46/a-d)*Maniola (s.str.) jurtina* (Linnaeus,1758)

Number of individuals on observation fields are few.

64- Büyük Esmer*Maniola (s.str.) megala* (Oberthür,1909)

It is not observed in the studying areas.

65- Anadolu melikesi (Fig.47/a-b)*Melanargia (Turcargia) larissa*
(Geyer,[1828])¹⁶

Number of individuals on observation fields are few.

66- Karanlık Orman Esmeri (Fig.48/a-c)*Pararge aegeria* (Linnaeus,1758)

Number of individuals on observation fields are few.

67- Anadolu Yalancıcadısı (Fig.49/a-c)*Pseudochazara (Achazara) anthelea*
(Hübner,[1824])

Number of individuals on observation fields are few.

68- Lidya Yalancıcadısı (Fig.50/a)*Pseudochazara (s.str.) lydia* (Staudinger,1878)

One individual is observed on a single field.

69- Pironiya*Pyronia tithonus* (Linnaeus,1771)

It is not observed in the studying areas.

70- Beyaz Damarlı Pireis (Fig.51/a-b)*Satyrus (Asatyrus (s.str.)) amasinus*
Staudinger,1861

Very few individuals are observed on a single field.

¹⁴ Selected lectotype comes from Izmir, not Mersin (Kudrna, 1977) (Editorial).¹⁵ *Papilio roxelana* Cramer,1777 was proposed on the material collected from Constantinople [İstanbul] and Smyrna [Izmir] (Editorial).¹⁶ the subspecies is *lesbina* Wagener,1976 (Editorial).

Lycaenidae

Totally 33 species are known in İzmir Province. Among them, 9 species could not be photographed or observed so far.

71- Zümrüt (Fig.52/a-d)
Callophrys rubi (Linnaeus,1758)

Very few individuals are observed.

72- Kutsalmavi (Fig.53/a-c)
Celastrina argiolus (Linnaeus,1758)

Number of individuals on observation fields are few. It is observed in gardens, and residential areas.

73- Mücevherkelebeği (Fig.54/a)
Chilades (Freyeria) trochylus (Freyer,[1843])

Few individuals are observed on two different fields.

74- Mavi Osiris
Cupido (s.str.) osiris (Meigen,[1829])

It is not observed in the studying areas.

75- Mormeşe (Fig.55/a)*
Quercusia quercus (Linnaeus,1758)

New record! Very few individuals are observed on a single field.

76- Karagözmavisi (Fig.56/a-c)
Glaucopsyche (s.str.) alexis (Poda,1761)

Number of individuals on observation fields are few.

77- Anadolu Devmavisi (Fig.57/a)*
Glaucopsyche (Iolana) lessei (Bernardi,1964)

New record! One individual is observed on single field.

78- Lampides (Fig.58/a-c)
Lampides boeticus (Linnaeus,1767)

Number of individuals on observation fields are few. It is observed in gardens in residential areas.

79- Mavizebra (Fig.59/a-c)
Leptotes pirithous (Linnaeus,1767)

Number of individuals on observation fields are few. It is observed in gardens, and residential areas.

80- Büyük Morbakırgüzeli (Fig.60/a)*Lycaena (Alciphronia) alciphron*
(Rottemburg,1775)

One individual is observed on single field.

81- İslibakırgüzeli (Fig.61/a-c)
Lycaena (Loweia) tityrus (Poda,1761)

Few individuals are observed on single field.

82- Alevateşgüzeli
Lycaena (Thersamonia) kefersteinii
(Gerhard,[1850])

It is not observed in the studying areas.

83- Küçükateşgüzeli (Fig.62/a-d)
Lycaena (Thersamonia) thersamon
(Esper,[1784])¹⁷

Number of individuals on observation fields are few.

84- Dağateşi
Lycaena (Thersamonia) thetis (Klug,1834)

It is not observed in the studying areas.

85- Beneklibakırgüzeli (Fig.63/a-b)
Lycaena (s.str.) phlaeas (Linnaeus,1761)¹⁸

Number of individuals on observation fields are few. It is observed in gardens in residential areas.

86- Doğulu Esmergöz
Plebejus (Kretania) carmon (Gerhard,[1851])

It is not observed in the studying areas.

87- Anadolu Esmergözü (Fig.64/a-b)
Plebejus (Plebejides) modicus Verity,1935¹⁹

Very few are observed on single field.

88- Çokgözlü Torosmavisi
Polyommatus (Aricia (Pseudoaricia)) isauricus
(Staudinger,1871)

It is not observed in the studying areas.

89- Çokgözlü Esmer (Fig.65/a-c)

¹⁷ *Papilio hyllus* Cramer,1775 was described from Smyrna [İzmir] (see also Koçak,A.Ö., 1983, On the nomenclature of *Thersamonia thersamon* (Esper,1784) from the West Palaearctic Region (*Lycaenidae*, *Lepidoptera*). *Priamus* 3 (1): 3-5 (Editorial).

¹⁸ *Papilio tineus* Cramer,1777 was proposed from "Smirne" [=İzmir], which is currently considered the subspecific name of the Anatolian Beneklibakırgüzeli (Editorial).

¹⁹ This group needs a taxonomical revision (Editorial).

Polyommatus (Aricia (s.str.)) agestis ([Denis & Schiffermüller],1775)

Number of individuals on observation fields are few.
It is observed in gardens in residential areas.

90- Çokgözlü Ormanesmeri (Fig.65d)*

Polyommatus (Aricia (s.str.)) artaxerxes
(Fabricius,1793)²⁰

New record! Only one individual is observed at Bozdağ 1600m.

91- Çokgözlü Balkan mavisi (Fig.66/a)*

Polyommatus (Aricia (Ultraaricia)) anteros
(Freyer,[1838])

New record! Only one individual is observed on single field.

92- Anormal Çokgözlü

Polyommatus (s.str. (Agrodiaetus (Admetusia))) admetus (Esper,[1783])

It is not observed in the studying areas.

93- Çokgözlü amanda (Fig.67/a-d)*

Polyommatus (s.str. (Plebicula)) amandus
(Schneider,1792)

New record! Few are observed on two different fields.

94- Çokgözlü Dafnis

Polyommatus (s.str. (Meleageria)) daphnis
([Denis & Schiffermüller],1775)

It is not observed in the studying areas.

²¹95- Çokgözlü Menekşemavisi (Fig.68/a)

Polyommatus (s.str. (Thersitesia)) thersites
(Canterer,[1835])

Number of individuals on observation fields are few.

96- Çokgözlü Mavi (Fig.69/a-d)

Polyommatus (s.str.) icarus (Rottemburg,1775)

Number of individuals on observation fields are few.
It is observed in gardens in residential areas.

97- Bavius (Fig.70/a-c)*

Rubrapterus bavius (Eversmann,1832)²²

New record! Number of individuals on observation fields are few.

98- Himalayamavisi (Fig.71/a)

Pseudophilotes vicrama (Moore,1865)

Single individual is observed on single field.

99- Minik Sevbeni (Fig.72/a)*

Satyrium (Nordmannia) acaciae
(Fabricius,1787)

New record! Few individuals are observed on single field.

100- Sevbeni

Satyrium (Nordmannia) abdominalis
(Gerhard,[1850])

It is not observed in the studying areas.

101- Büyük Sevbeni (Fig.73/a-d)*

Satyrium (Nordmannia) ilicis (Esper,[1779])

New record! It is common on observed fields.

102- Anadolu Turanmavisi

Turanana endymion (Freyer,[1850])

It is not observed in the studying areas.

103- Balkan kaplanı (Fig.74/a-c)*

Tarucus (s.str.) balkanicus (Freyer,[1843])

New record! Number of individuals on observation fields are few.

Hesperiidae

Totally 19 species are known in İzmir Province. Among them, 9 species could not be photographed or observed so far.

104- Cezayir Zıpzıpı

Carcharodus (Lavatheria) stauderi
Reverdin,1913

It is not observed in the studying areas.

105- Şark Zıpzıpı (Fig.75/a-c)

Carcharodus (Reverdinus) orientalis
Reverdin,1913

Number of individuals on observation fields are few.

²⁰ This species was also found by A.Koçak at Murat Dağı (Kütahya Prov.) (Editorial).

²¹ One male of *Polyommatus (Plebejidea) loewii* (Zeller) was examined by A.Koçak in a Museum of Germany captured at upper heights of İzmir city! This record needs confirmation (Editorial).

²² The subspecies of this species is *egeus* Herrich-Schaeffer,1852 (Editorial).

106- Hatmi Zıpzıpı (Fig.76/a-d)*Carcharodus (s.str.) alceae* (Esper,[1780])

Number of individuals on observation fields are few.
It is observed in gardens in residential areas.

107- Alsides Zıpzıpı*Eogenes alcides* Herrich-Schäffer,[1852]

It is not observed in the studying areas.

108- Kara Zıpzıpı (Fig.77/a-c)*Erynnis (Hesperopegus) marloyi* (Boisduval,[1834])

Few numbers are observed on two different fields.

109- Pash Zıpzıpı*Erynnis (s.str.) tages* (Linnaeus,1758)

It is not observed in the studying areas.

110- Nostrodamus*Gegenes nostrodamus* (Fabricius,1793)

It is not observed in the studying areas.

111- Cüce Zıpzıpı (Fig.78/a-h)*Gegenes pumilio* (Hoffmannsegg,1804)

Few individuals are observed on single field.

112- Gümüş Benekli Zıpzıpı*Hesperia comma* (Linnaeus,1758)

It is not observed in the studying areas.

113- Orman zıpzıpı (Fig.79/a-b)**Ochlodes venatus* (Bremer & Grey,[1852])

New Record! Single individual is observed on one field.

114- Beyaz Çilli Kara Zıpzıpı (Fig.80/a-c)*Pelopidas thrax* (Hübner,[1821])

Number of individuals on observation fields are few.

115- İspanyol Zıpzıpı*Pyrgus armoricanus* (Oberthür,1910)

It is not observed in the studying areas.

116- Güzel Zıpzıpı*Pyrgus cinarae* (Rambur,[1839])

It is not observed in the studying areas.

117- Ege Zıpzıpı (Fig.81/a-d)*Pyrgus melotis* (Duponchel,[1834])

Number of individuals on observation fields are few.

118- Sarıbandlı Zıpzıpı (Fig.82/a-b)*Pyrgus sidae* (Esper,[1784])

Single individual is observed on one field.

119- Kızıl Zıpzıpı (Fig.83/a-c)*Spialia (Neospialia) orbifer* (Hübner,[1823])

Number of individuals on observation fields are few.

120- Sarı Lekeli Zıpzıpı*Thymelicus acteon* (Rottemburg,1775)

It is not observed in the studying areas.

121- Levantin Zıpzıpı*Thymelicus hyrax* (Lederer,1861)

It is not observed in the studying areas.

122- Sarı Antenli Zıpzıpı (Fig.84/a-e)*Thymelicus sylvestris* (Poda,1761)

Number of individuals on observation fields are few.

Figures ²³

Fig. 1/a- *Archon apollinus* (Herbst,1798) (male) (Balçova, 20.03.2005. Photo: Ali Atahan).



Fig. 1/b - *Archon apollinus* (Herbst,1798) (female) (Balçova, 09.03.2008. Photo: Vildan Bozacı).

²³ Copyrights of the photographs belong to the owners cited below.



Fig. 1/c - *Archon apollinus* (Herbst,1798) (male) (Balçova, 09.03.2008. Photo: Vildan Bozacı).



Fig. 1/d - *Archon apollinus* (Herbst,1798) (female) (Balçova, 09.03.2008. Photo: Vildan Bozacı).

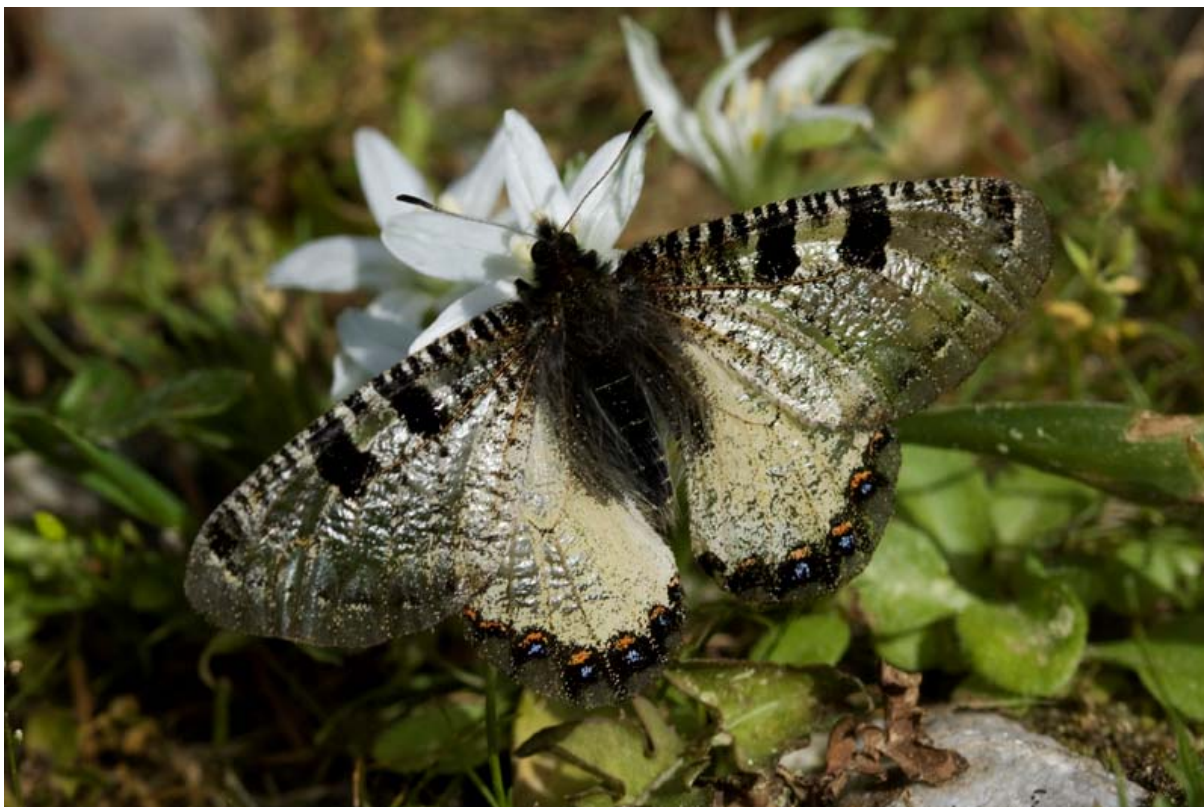


Fig. 1/e - *Archon apollinus* (Herbst,1798) (male) (Kemalpaşa/Aşağıkızılca, 19.04.2008, Photo: Vildan Bozacı).



Fig. 2/a - *Iphiclides podalirius* (Linnaeus,1758) (Selçuk, 13.03.2004. Photo: Ali Atahan).



Fig. 2/b - *Iphiclides podalirius* (Linnaeus,1758) (Balçova, 21.06.2007. Photo: Vildan Bozacı).



Fig. 2/c - *Iphiclides podalirius* (Linnaeus,1758) (Kemalpaşa/Kurudere, 24.04.2008. Photo: Kurtuluş Şimşek).



Fig. 2/d - *Iphiclides podalirius* (Linnaeus,1758) (Bozdağ, 27.07.2008. Photo: Vildan Bozacı).



Fig. 3/a - *Papilio machaon* Linnaeus, 1758 (Balçova, 15.07.2006. Photo: Ali Atahan).



Fig. 3/b - *Papilio machaon* Linnaeus, 1758 (Balçova, 05.07.2007. Photo: Vildan Bozacı).



Fig. 3/c - *Papilio machaon* Linnaeus, 1758 (Kemalpaşa/Aşağıkızılca, 19.08.2007; Kurtuluş Şimşek).



Fig. 3/d - *Papilio machaon* Linnaeus, 1758 (Foça, 13.03.2008. Photo: Vildan Bozacı).



Fig. 4/a - *Zerynthia cerisyi* (Godart,1822) (Balçova, 12.05.2005. Photo: Ali Atahan).



Fig. 4/b - *Zerynthia cerisyi* (Godart,1822) (in copula) (Foça, 13.03.2008. Photo: Vildan Bozacı).

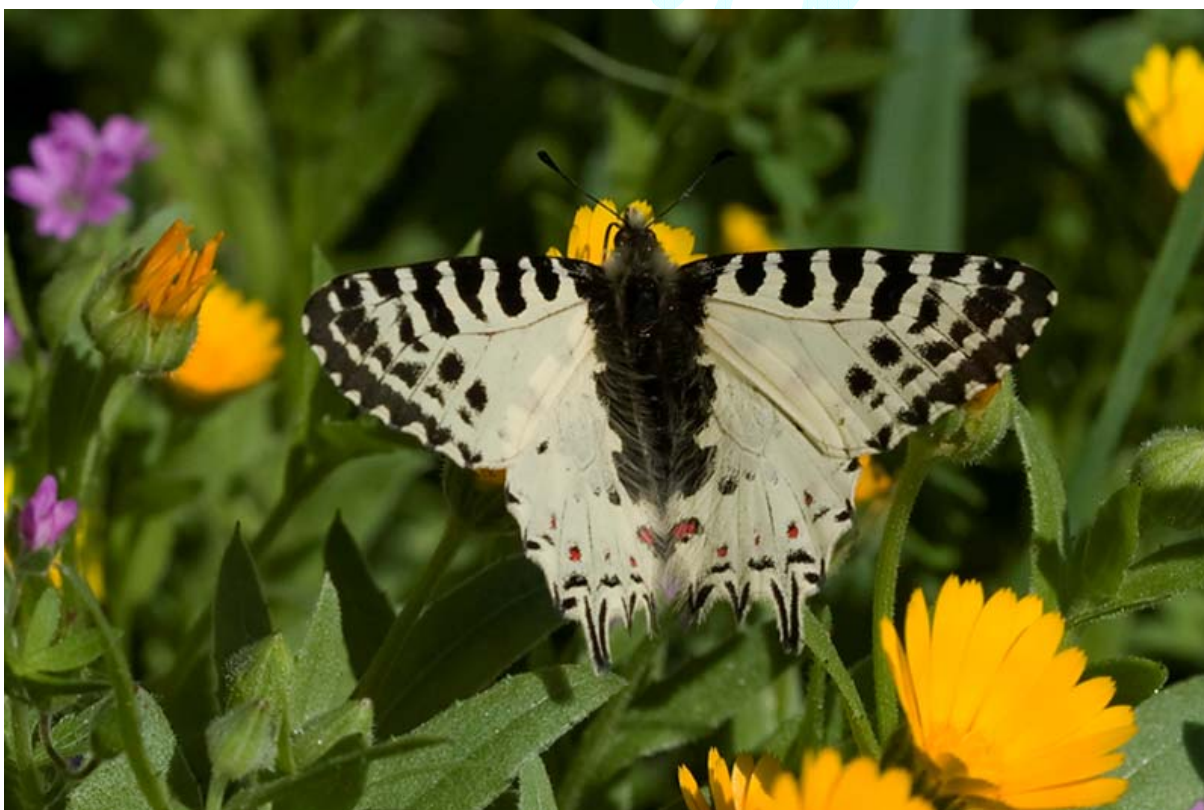


Fig. 4/c - *Zerynthia cerisyi* (Godart,1822) (male) (Urla, 22.03.2008. Photo: Vildan Bozacı).



Fig. 4/d - *Zerynthia cerisyi* (Godart,1822) (Kemalpaşa/Yiğitler, 16.04.2008. Photo: Kurtuluş Şimşek).



Fig. 5/a - *Anthocharis cardamines* (Linnaeus,1758) (male) (Balçova, 02.04.2006. Photo: Ali Atahan).



Fig. 5/b - *Anthocharis cardamines* (Linnaeus,1758) (female) (Balçova, 29.03.2008. Photo: Vildan Bozacı).



Fig. 5/c - *Anthocharis cardamines* (Linnaeus,1758) (Kemalpaşa/Kurudere, 19.04.2008. Photo: Kurtuluş Şimşek).



Fig. 6/a - *Aporia crataegi* (Linnaeus,1758) (Karaburun, 19.05.2005. Photo: Ali Atahan).



Fig. 6/b - *Aporia crataegi* (Linnaeus,1758) (in copula) (Payamlı, 26.04.2008. Photo: Munir Hançer).



Fig. 6/c - *Aporia crataegi* (Linnaeus,1758) (Kemalpaşa/Kurudere, 10.05.2008. Photo: Vildan Bozacı)



Fig. 7/a - *Colias crocea* (Fourcroy,1785) (Kemalpaşa/Yiğitler, 16.04.2008. Photo: Kurtuluş Şimşek).



Fig. 7/b - *Colias crocea* (Fourcroy,1785) (Balçova, 29.06.2006. Photo: Ali Atahan).



Fig. 7/c - *Colias crocea* (Fourcroy,1785) (in copula) (Kemalpaşa/Nazarköy, 10.05.2008. Photo: Munir Hançer).



Fig.8/a - *Euchloe ausonia* (Hübner,[1804]) (Çiğli/Gediz Deltası, 28.04.2004. Photo: Ali Atahan).



Fig. 8/b - *Euchloe ausonia* (Hübner,[1804]) (Balçova, 08.03.2008. Photo: Vildan Bozaci).



Fig. 8/c - *Euphydryas aurinia* (Hübner,[1804]) (in copula) (Foça, 13.03.2008. Photo: Vildan Bozacı).



Fig. 8/d - *Euphydryas aurinia* (Hübner,[1804]) (in copula) (Kemalpaşa/Kurudere, 13.04.2008. Photo: Munir Hançer).



Fig. 9/a - *Gonepteryx cleopatra* (Linnaeus,1767) (Narlıdere, 21.05.2005. Photo: Ali Atahan).



Fig. 9/b - *Gonepteryx cleopatra* (Linnaeus,1767) (Balçova, 11.06.2006. Photo: Demet çelikkaya).



Fig. 9/c - *Gonepteryx cleopatra* (Linnaeus,1767) (Merkez, 10.06.2007. Photo: Vildan Bozacı).



Fig. 9/d - *Gonepteryx cleopatra* (Linnaeus,1767) (Buca/Kaynaklar, 01.03.2008. Photo: Munir Hançer).



Fig. 10/a - *Leptidea sinapis* (Linnaeus,1758) (Buca/Kaynaklar, 26.05.2007. Photo: Ali Atahan).



Fig. 10/b - *Leptidea sinapis* (Linnaeus,1758) (Kemalpaşa/Yukarıkızılca, 28.06.2007. Photo: Kurtuluş Şimşek).



Fig. 11/a - *Pieris (Artogeia) krueperi* Staudinger,1860 (Buca/Kaynaklar, 05.08.2006. Photo: Ali Atahan).



Fig. 11/b - *Pieris (Artogeia) krueperi* Staudinger,1860 (Buca/Kaynaklar, 30.05.2008. Photo: Munir Hançer).



Fig. 12/a - *Pieris leucosoma* Schawerda,1905 (Balçova/ İnciralti, 05.09.2005. Photo: Ali Atahan).



Fig. 12/b - *Pieris leucosoma* Schawerda,1905 (Dikili, 13.10.2007. Photo: Vildan Bozacı).



Fig. 12/c - *Pieris leucosoma* Schawerda,1905 (Urla, 22.03.2008. Photo: Vildan Bozaci).



Fig. 12/d - *Pieris leucosoma* Schawerda,1905 (Kemalpaşa/Cumalı, 18.05.2008. Photo: Kurtuluş Şimşek).



Fig. 13/a - *Pieris brassicae* (Linnaeus,1758) (Narlıdere, 21.05.2005. Photo: Ali Atahan).



Fig. 13/b - *Pieris brassicae* (Linnaeus,1758) (Buca/Kaynaklar, 10.06.2007. Photo: Orhan Gül).



Fig. 13/c - *Pieris brassicae* (Linnaeus,1758) (Urla, 03.11.2007. Photo: Vildan Bozaci).



Fig. 13/d - *Pieris brassicae* (Linnaeus,1758) (Urla, 22.03.2008. Photo: Vildan Bozaci).



Fig. 13/e - *Pieris brassicae* (Linnaeus,1758) (Kemalpaşa/Yiğitler, 16.04.2008. Photo: Kurtuluş Şimşek).



Fig. 13/f - *Pieris brassicae* (Linnaeus,1758) (Kemalpaşa/ Bağıyurdu (Spil Dağı), 24.05.2008. Photo: Munir Hançer).



Fig. 14/a - *Pontia chloridice* (Hübner,[1813]) (Kemalpaşa/Aşağıkızılca, 27.05.2007. Photo: Kurtuluş Şimşek).



Fig. 15/a - *Pontia edusa* (Fabricius,1777) (Buca/Kaynaklar, 13.05.2007. Photo: Ali Atahan).



Fig. 15/b - *Pontia edusa* (Fabricius,1777) (Buca/Kaynaklar, 10.06.2007. Photo: Orhan Gül).



Fig. 15/c - *Pontia edusa* (Fabricius,1777) (Dikili, 13.10.2007. Photo: Vildan Bozacı).



Fig. 15/d - *Pontia edusa* (Fabricius,1777) (Kemalpaşa/Kurudere, 18.05.2008. Photo: Munir Haçer).



Fig. 16/a - *Argynnis niobe* (Linnaeus,1758) (Kemalpaşa/Yiğitler, 02.06.2007. Photo: Ali Atahan).



Fig. 17/a - *Argynnis pandora* ([Denis & Schiffermüller],1775) (female) (Bozdağ, 03.06.2006. Photo: Ali Atahan).



Fig. 17/b - *Argynnis pandora* ([Denis & Schiffermüller],1775) (female) (Karşiyaka/Yamanlar, 23.09.2008. Photo: Demet Çelikkaya).



Fig. 17/c - *Argynnis pandora* ([Denis & Schiffermüller],1775) (female) (Kemalpaşa/Aşağıkızılca, 12.06.2008. Photo: Kurtuluş Şimşek).



Fig. 18/a - *Argynnis paphia* (Linnaeus,1758) (male) (Kemalpaşa/Yiğitler, 02.06.2007. Photo: Orhan Gül).



Fig. 18/b - *Argynnis paphia* (Linnaeus,1758) (Kemalpaşa/Yukarıkızılca, 27.06.2007. Photo: Kurtuluş Şimşek).



Fig. 18/c - *Argynnis paphia* (Linnaeus,1758) (female) (Tire/Kaplan Dağı, 27.07.2007. Photo: Vildan Bozacı).



Fig. 19/a - *Brenthis daphne* (Bergsträsser,1780) (Balçova, 11.06.2006. Photo: Ali Atahan).



Fig. 19/b - *Brenthis daphne* (Bergsträsser,1780) (Kemalpaşa/Kamberler, 08.06.2008. Photo: Kurtuluş Şimşek).



Fig. 20/a - *Charaxes jasius* (Linnaeus,1767) (Kemalpaşa/Nazarköy(Kurudere), 14.09.2008. Photo: Munir Hançer).



Fig. 20/b - *Charaxes jasius* (Linnaeus,1767) (Kemalpaşa/Nazarköy(Kurudere), 14.09.2008. Photo: Vildan Bozacı).



Fig. 21/a - *Cynthia cardui* (Linnaeus,1758) (Bergama, 12.06.2005. Photo: Ali Atahan).



Fig. 21/b - *Cynthia cardui* (Linnaeus,1758) (Buca/Kaynaklar, 10.06.2007. Photo: Orhan Gül).



Fig. 21/c - *Cynthia cardui* (Linnaeus,1758) (Urla, 22.03.2008. Photo: Vildan Bozacı).



Fig. 22/a - *Issoria lathonia* (Hübner,[1800]) (Balçova, 12.05.2007. Photo: Ali Atahan).



Fig. 22/b - *Issoria lathonia* (Hübner,[1800]) (Kemalpaşa, 02.06.2007. Photo: Orhan Gül).



Fig. 22/c - *Issoria lathonia* (Hübner,[1800]) (Buca/Kaynaklar, 17.05.2008. Photo: Vildan Bozacı).



Fig. 23/a - *Limenitis reducta* Staudinger,1901 (Balçova, 04.06.2005 . Photo: Ali Atahan).



Fig. 23/b - *Limenitis reducta* Staudinger,1901 (Balçova, 10.06.2006. Photo: Demet Çelikkaya).



Fig. 23/c - *Limenitis reducta* Staudinger,1901 (Buca/Kaynaklar, 13.05.2007. Photo: Orhan Gül).



Fig. 23/d - *Limenitis reducta* Staudinger,1901 (Kemalpaşa/Yukarıkızılca, 17.06.2008. Photo: Kurtuluş Şimşek).



Fig. 24/a - *Melitaea cinxia* (Linnaeus,1758) (Bozdağ, 03.06.2006. Photo: Ali Atahan).

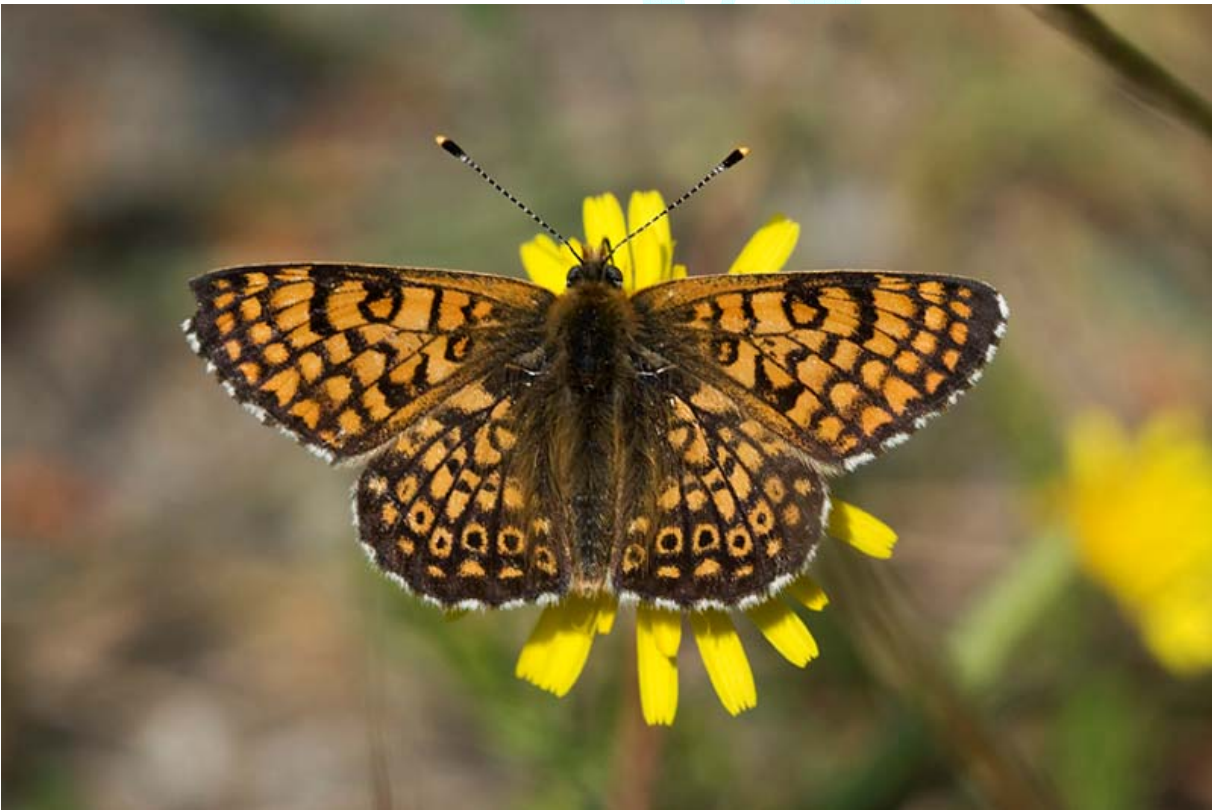


Fig. 24/b - *Melitaea cinxia* (Linnaeus,1758) (Kemalpaşa/Kurudere, 10.05.2008. Photo: Vildan Bozacı).



Fig. 24/c - *Melitaea cinxia* (Linnaeus,1758) (Kemalpaşa/Kurudere, 10.05.2008. Photo: Munir Hançer).



Fig. 25/a - *Melitaea punica* Oberthür,1876 (Balçova, 29.04.2007. Photo: Ali Atahan).



Fig. 25/b - *Melitaea punica* Oberthür,1876 (Kemalpaşa/Kurudere, 19.04.2008. Photo: Vildan Bozacı).



Fig. 25/c - *Melitaea punica* Oberthür,1876 (Kemalpaşa/Kurudere, 19.04.2008. Photo: Vildan Bozacı).



Fig. 26/a - *Melitaea didyma* (Esper,[1788]) (Bornova, 23.07.2006. Photo: Ali Atahan).



Fig. 26/b - *Melitaea didyma* (Esper,[1788]) (Kemalpaşa/Kurudere, 18.05.2008. Photo: Munir Hançer).



Fig. 26/c - *Melitaea didyma* (Esper,[1788]) (Kemalpaşa/ Bağyurdu (Spil Dağı), 24.05.2008. Photo: Munir Hançer).



Fig. 27/a - *Melitaea fascelis* (Fabricius,1787) (Buca/Kaynaklar, 13.05.2007. Photo: Ali Atahan).



Fig. 27/b - *Melitaea fascelis* (Fabricius,1787) (Kemalpaşa/Kurudere, 18.05.2008. Photo: Munir Hançer).



Fig. 27/c - *Melitaea fascelis* (Fabricius,1787) (Bergama, 18.05.2008. Photo: Vildan Bozacı).



Fig. 28/a - *Nymphalis polychloros* (Linnaeus,1758) (Bozdağ, 03.06.2006. Photo: Ali Atahan).

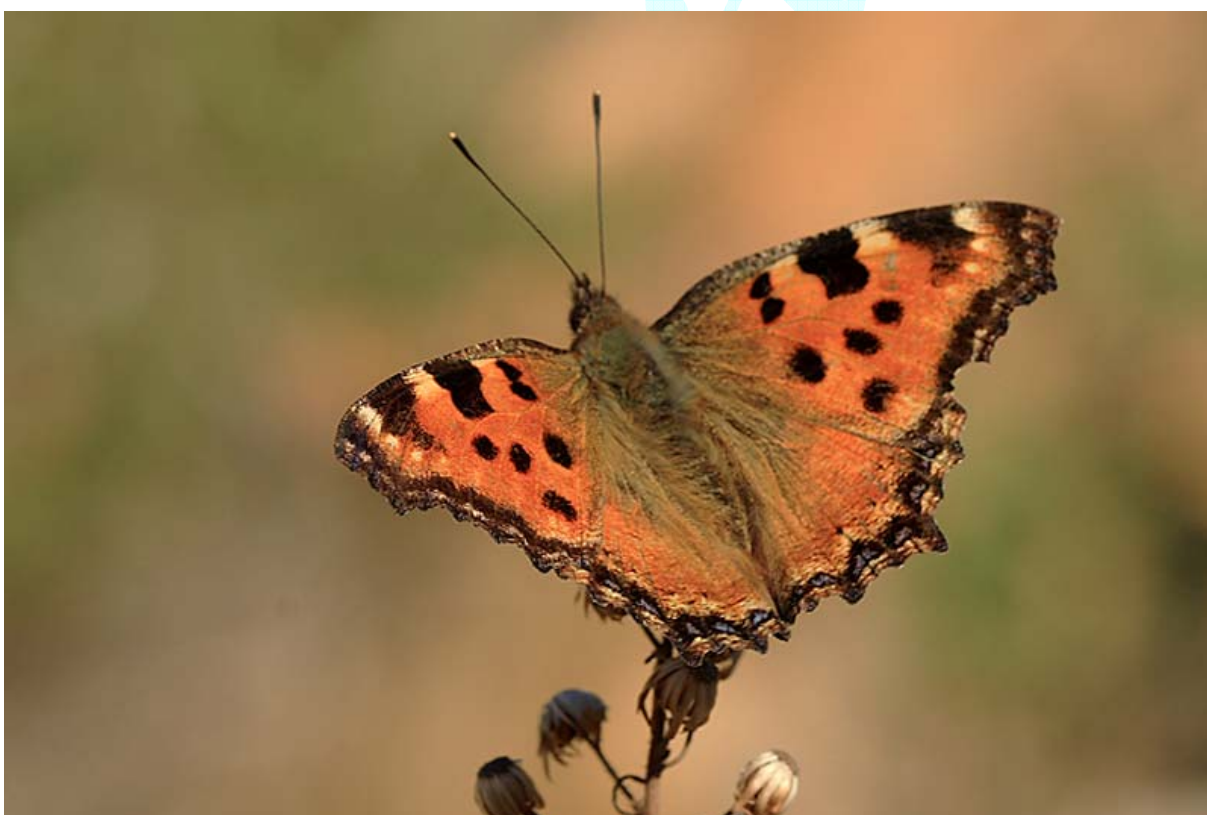


Fig. 28/b - *Nymphalis polychloros* (Linnaeus,1758) (Balçova, 24.02.2008. Photo: Vildan Bozacı).



Fig. 28/c - *Nymphalis polychloros* (Linnaeus,1758) (Balçova, 01.03.2008. Photo: Vildan Bozacı).



Fig. 29/a - *Polygonia c-album* (Linnaeus,1758) (Tire/Kaplan, 30.06.2007. Photo: Vildan Bozacı).



Fig. 29/b - *Polygonia c-album* (Linnaeus,1758) (Kemalpaşa/Aşağıkızılca, 28.05.2008. Photo: Kurtuluş Şimşek).

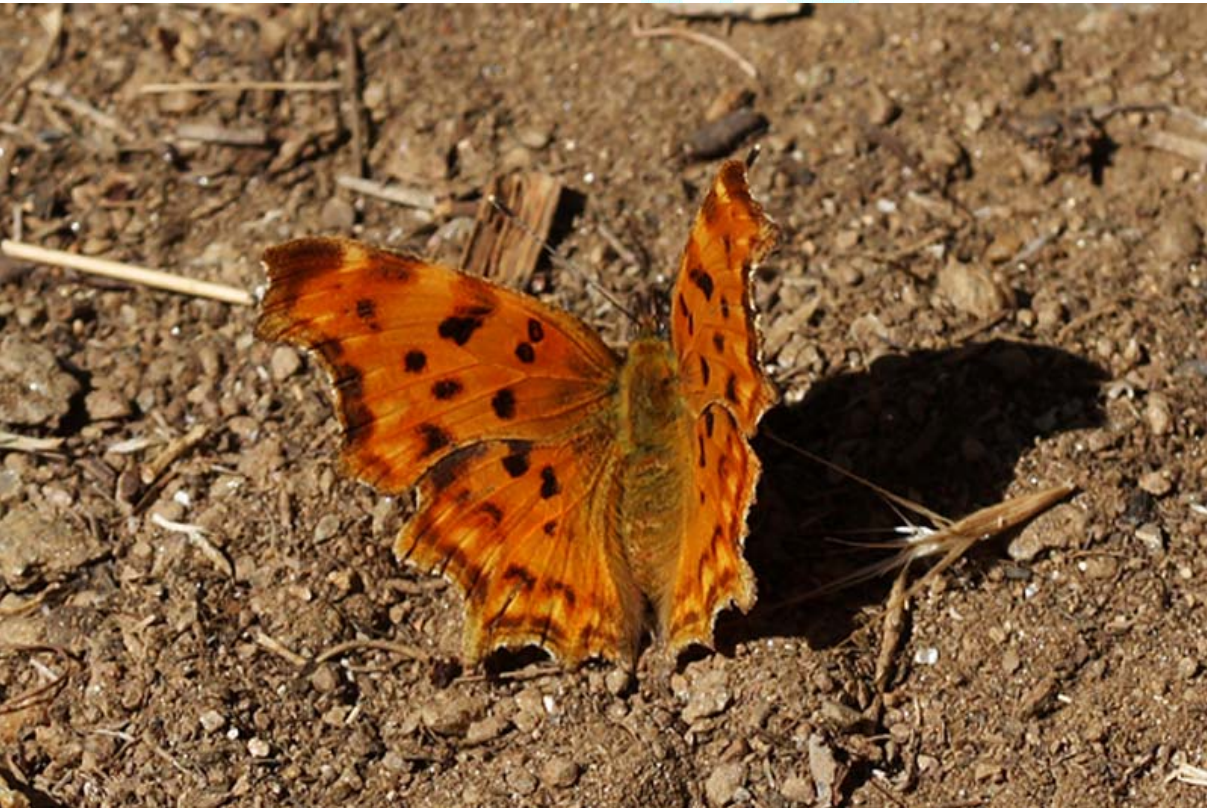


Fig. 29/c - *Polygonia c-album* (Linnaeus,1758) (Ödemiş/Bozdağ, 27.07.2008. Photo: Vildan Bozacı).



Fig. 30/a - *Polygonia egea* (Cramer,[1775]) (Balçova, 29.06.2006. Photo: Ali Atahan).



Fig. 31/a - *Vanessa atalanta* (Linnaeus,1758) (Balçova/ İnciralti, 09.12.2006. Photo: Ali Atahan).



Fig. 31/b - *Vanessa atalanta* (Linnaeus,1758) (Balçova, 25.02.2007. Photo: Munir Hançer).



Fig. 31/c - *Vanessa atalanta* (Linnaeus,1758) (Kemalpaşa/Kurudere, 18.05.2008. Photo: Kurtuluş Şimşek).



Fig. 32/a – *Danaus chrysippus* (Linnaeus,1758) (Selçuk, 11.12.2004. Photo: Ali Atahan).



Fig. 33/a - *Libythea celtis* (Laicharting,1782) (Kemalpaşa/Yiğitler, 01.09.2007. Photo: Ali Atahan).



Fig. 33/b - *Libythea celtis* (Laicharting,1782) (Kemalpaşa/Yiğitler, 01.09.2007. Photo: Vildan Bozacı).



Fig. 33/c - *Libythea celtis* (Laicharting,1782) (Kemalpaşa/Yukankızılca, 13.04.2008. Photo: Kurtuluş Şimşek).



Fig. 34/a - *Arethusana arethusa* ([Denis & Schiffermüller],1775) (Ödemiş/Bozdağ, 27.07.2008. Photo: Vildan Bozacı).



Fig. 35/a - *Coenonympha pamphilus* (Linnaeus,1758) (Buca/Kaynaklar, 26.06.2005. Photo: Ali Atahan).



Fig. 35/b - *Coenonympha pamphilus* (Linnaeus,1758) (Dikili, 31.07.2007. Photo: Vildan Bozaci).



Fig. 35/c - *Coenonympha pamphilus* (Linnaeus,1758) (Bayındır, 30.03.2008. Photo: Vildan Bozaci).



Fig. 36/a - *Hipparchia fatua* (Freyer,1844) (Seferihisar, 30.06.2007. Photo: Ali Atahan).



Fig. 36/b - *Hipparchia fatua* (Freyer,1844) (Balçova, 01.10.2006. Photo: Demet Çelikkaya).



Fig. 36/c - *Hipparchia fatua* (Freyer,1844) (Kemalpaşa/Kurudere, 14.09.2008. Photo: Vildan Bozacı).



Fig. 37/a - *Hipparchia statilinus* (Hufnagel,1766) (Bozdağ, 27.07.2008. Photo: Munir Hançer).



Fig. 38/a – *Hipparchia aristaeus* (Bonelli,1826) (Buca/Kaynaklar, 05.08.2006. Photo: Ali Atahan).



Fig. 38/b – *Hipparchia aristaeus* (Bonelli,1826) (Buca/Kaynaklar, 15.09.2007; Vildan Bozacı).



Fig. 39/a – *Hipparchia mersina* (Staudinger,1871) (Buca/Kaynaklar, 10.06.2007. Photo: Ali Atahan).



Fig. 39/b – *Hipparchia mersina* (Staudinger,1871) (male) (Buca/Kaynaklar, 17.05.2008. Photo: Vildan Bozacı).



Fig. 40/a – *Hipparchia syriaca* (Staudinger,1871) (Balçova, 11.06.2006. Photo: Ali Atahan).



Fig. 40/b – *Hipparchia syriaca* (Staudinger,1871) (Kemalpaşa/Kurudere, 14.09.2008. Photo: Vildan Bozacı).



Fig. 41/a – *Hyponephele lupina* (Costa,[1836]) (Buca/Kaynaklar, 18.08.2007. Photo: Munir Hançer).



Fig. 41/b – *Hyponephele lupina* (Costa,[1836]) (Bozdağ, 27.07.2008. Photo: Munir Hançer).



Fig. 42/a – *Kirinia roxelana* (Cramer,[1777]) (Balçova, 04.06.2005. Photo: Ali Atahan).



Fig. 42/b – *Kirinia roxelana* (Cramer,[1777]) (Kemalpaşa, 06.02.2007. Photo: Orhan Gül).



Fig. 42/c – *Kirinia roxelana* (Cramer,[1777]) (Kemalpaşa/Vişneli, 18.05.2008. Photo: Kurtuluş Şimşek).



Fig. 43/a – *Lasiommata maera* (Linnaeus,1758) (Kemalpaşa/Kurudere, 13.04.2008. Photo: Munir Haçer).



Fig. 43/b – *Lasiommata maera* (Linnaeus,1758) (Kemalpaşa/Kurudere, 13.04.2008. Photo: Munir Hançer).



Fig. 44/a – *Lasiommata maera* (Linnaeus,1758) (Çiğli/Gediz Deltası, 01.04.2007. Photo: Ali Atahan).



Fig. 44/b – *Lasiommata megera* (Linnaeus,1767) (male), (Urla, 22.03.2008. Photo: Vildan Bozacı).



Fig. 44/c – *Lasiommata megera* (Linnaeus,1767) (female) (Balçova, 08.07.2008. Photo: Munir Hançer).



Fig. 45/a – *Maniola telmessia* (Zeller,1847) (female) (Balçova, 11.06.2006. Photo: Demet Çelikkaya).



Fig. 45/b – *Maniola telmessia* (Zeller,1847) (male) (Buca/Kaynaklar, 13.05.2007. Photo: Orhan Gül).



Fig. 45/c – *Maniola telmessia* (Zeller,1847) (female) (Balçova, 22.09.2007. Photo: Vildan Bozacı).



Fig. 45/d – *Maniola telmessia* (Zeller,1847) (male) (Kemalpaşa/Kurudere, 10.05.2008. Photo: Vildan Bozacı).



Fig. 45/d – *Maniola telmessia* (Zeller,1847) (male) (Kemalpaşa/Kurudere, 10.05.2008. Photo: Vildan Bozacı).



Fig. 45/e – *Maniola telmessia* (Zeller,1847) (male) (Kemalpaşa/Kurudere, 10.05.2008. Photo: Vildan Bozacı).



Fig. 45/f – *Maniola telmessia* (Zeller,1847) (male) (Kemalpaşa/Cumalı, 18.05.2008. Photo: Kurtuluş Şimşek).



Fig. 45/g – *Maniola telmessia* (Zeller,1847) (female) (Kemalpaşa/Kamberler, 01.06.2008. Photo: Kurtuluş Şimşek).



Fig. 46/a – *Maniola jurtina* (Linnaeus,1758) (male) (Balçova, 17.05.2005. Photo: Ali Atahan).



Fig. 46/b – *Maniola jurtina* (Linnaeus,1758) (female) (Balçova, 09.07.2005. Photo: Ali Atahan).



Fig. 46/c – *Maniola jurtina* (Linnaeus,1758) (male) (Bergama, 19.05.2008. Photo: Vildan Bozacı).



Fig. 46/d – *Maniola jurtina* (Linnaeus,1758) (female) (Bergama, 19.05.2008. Photo: Vildan Bozacı).



Fig. 47/a – *Melanargia larissa* (Geyer,[1828]) (Kemalpaşa/Aşağıkızılca, 27.06.2007. Photo: Kurtuluş Şimşek).



Fig. 47/b – *Melanargia larissa* (Geyer,[1828]) (Bozdağ, 27.07.2008. Photo: Munir Hançer).



Fig. 48/a – *Pararge aegeria* (Linnaeus,1758) (Kemalpaşa/Aşağıkızılca, 26.06.2007. Photo: Kurtuluş Şimşek)



Fig. 48/b – *Pararge aegeria* (Linnaeus,1758) (Tire/Kaplan, 30.06.2007. Photo: Vildan Bozacı).

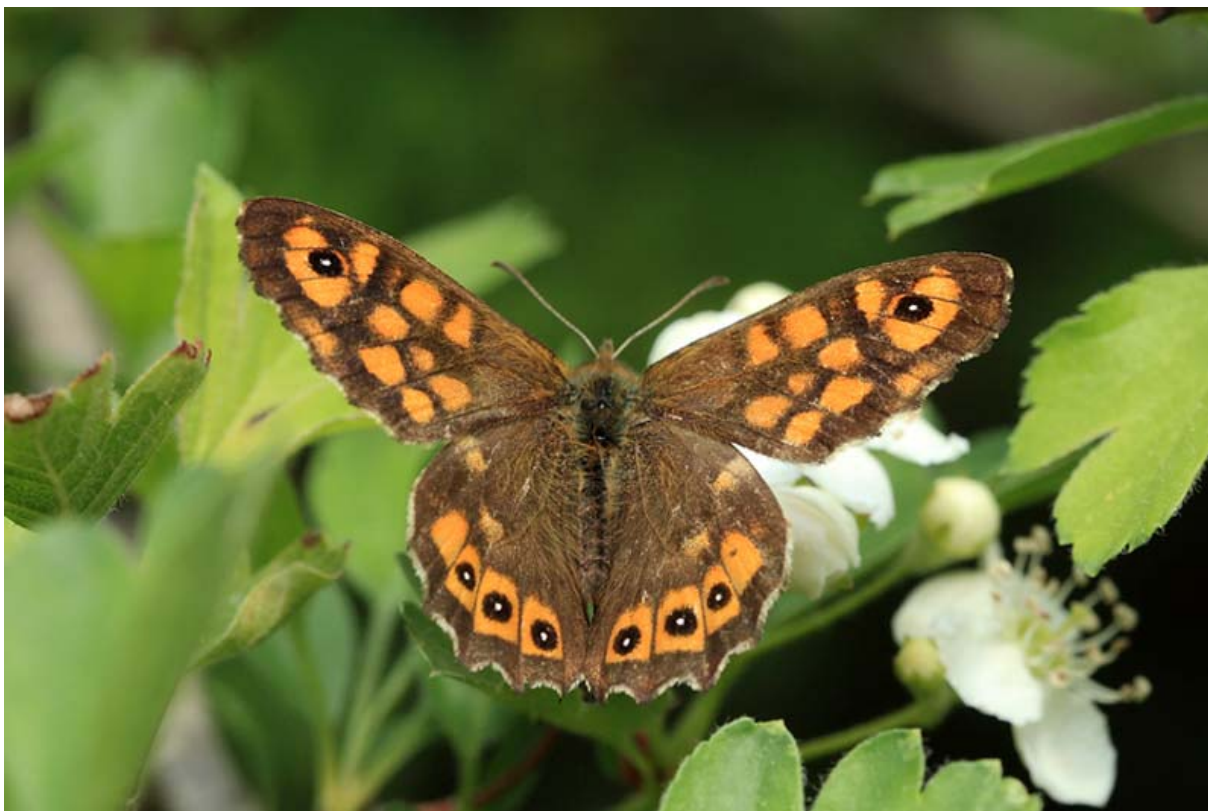


Fig. 48/c – *Pararge aegeria* (Linnaeus,1758) (Balçova, 29.03.2008. Photo: Vildan Bozaci).



Fig. 49/a – *Pseudochazara anthelea* (Hübner, [1824]) (male) (Balçova, 30.05.2006. Photo: Demet Çelikkaya).



Fig. 49/b – *Pseudochazara anthelea* (Hübner, [1824]) (female) (Buca/Kaynaklar, 01.06.2008. Photo: Munir Hançer).



Fig. 49/c – *Pseudochazara anthelea* (Hübner, [1824]) (male) (Kemalpaşa/Bağyurdu (Spil Dağı), 01.06.2008. Photo: Kurtuluş Şimşek).



Fig. 50/a – *Pseudochazara lydia* (Staudinger, 1878) (Bozdağ, 27.07.2008. Photo: Vildan Bozacı).



Fig. 51/a – *Satyrus amasinus* Staudinger, 1861 (Ödemiş/Bozdağ, 27.07.2008. Photo: Vildan Bozacı).



Fig. 51/b – *Satyrus amasinus* Staudinger, 1861 (Ödemiş/Bozdağ, 27.07.2008. Photo: Vildan Bozacı).



Fig. 52/a – *Callophrys rubi* (Linnaeus, 1758) (Çeşme/Ildırı, 25.03.2007. Photo: Ali Atahan).



Fig. 52/b – *Callophrys rubi* (Linnaeus,1758) (Bayındır, 30.03.2008. Photo: Vildan Bozacı).



Fig. 52/c – *Callophrys rubi* (Linnaeus,1758) (Kemalpaşa/Nazarköy(Kurudere), 19.04.2008. Photo: Munir Hançer).



Fig. 52/d – *Callophrys rubi* (Linnaeus,1758) (Kemalpaşa/Nazarköy(Kurudere), 19.04.2008. Photo: Kurtuluş Şimşek).



Fig. 53/a – *Celastrina argiolus* (Linnaeus,1758) (Kemalpaşa, 02.06.2007. Photo: Ali Atahan).



Fig. 53/b – *Celastrina argiolus* (Linnaeus,1758) (Buca/Kaynaklar, 23.03.2008. Photo: Munir Hançer).



Fig. 53/c – *Celastrina argiolus* (Linnaeus,1758) (Buca/Kaynaklar, 23.03.2008. Photo: Kurtuluş Şimşek).



Fig. 54/a – *Chilades trochylus* (Freyer,[1843]) (Bornova, 23.07.2006. Photo: Ali Atahan).



Fig. 55/a – *Quercusia quercus* (Linnaeus,1758) (Kemalpaşa/Yiğitler, 01.09.2007. Photo: Ali Atahan).



Fig. 56/a – *Glaucopsyche alexis* (Poda,1761) (Buca/Kaynaklar, 06.05.2007. Photo: Ali Atahan).



Fig. 56/b – *Glaucopsyche alexis* (Poda, 1761) (Kemalpaşa/Kurudere, 07.04.2008. Photo: Kurtuluş Şimşek).



Fig. 56/c – *Glaucopsyche alexis* (Poda,1761) (Bornova/Çiçekliköy, 20.04.2008. Photo: Vildan Bozacı).



Fig. 57/a – *Glaucopsyche (Iolana) lessei* (Bernardi,1964) (Buca/Kaynaklar, 13.05.2007. Photo: Munir Hançer).



Fig. 58/a – *Lampides boeticus* (Linnaeus,1767) (Balçova, 11.06.2005. Photo: Ali Atahan).

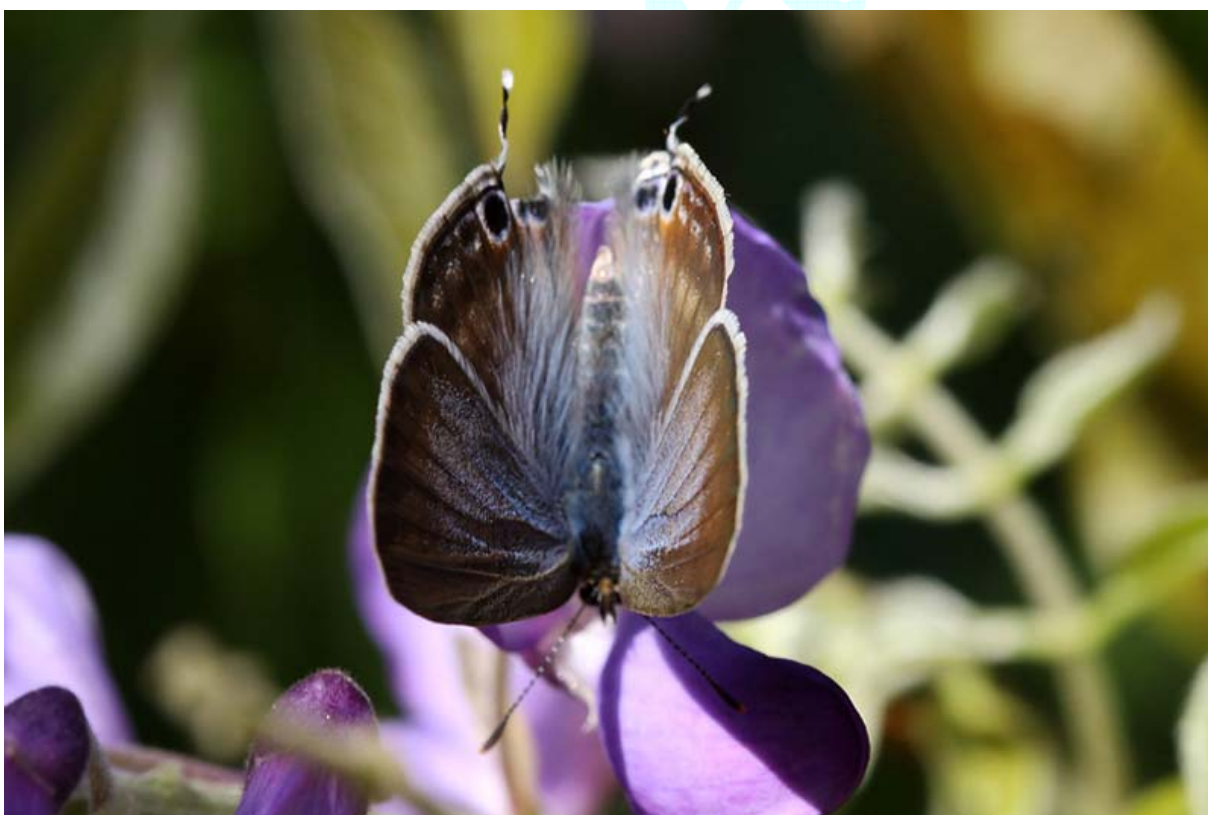


Fig. 58/b *Lampides boeticus* (Linnaeus,1767) (female) (Merkez, 08.09.2007. Photo: Vildan Bozaci).



Fig. 58/c – *Lampides boeticus* (Linnaeus,1767) (male) (Bozdağ, 27.07.2008. Photo: Munir Hançer).



Fig. 59/a – *Leptotes pirithous* (Linnaeus,1767) (Buca/Kaynaklar, 16.09.2006. Photo: Ali Atahan).



Fig. 59/b – *Leptotes pirithous* (Linnaeus,1767) (female) (Merkez, 08.09.2007. Photo: Vildan Bozacı).



Fig. 59/c – *Leptotes pirithous* (Linnaeus,1767) (male) (Merkez, 08.09.2007. Photo: Vildan Bozacı).



Fig. 60/a – *Lycaena alciphron* (Rottemburg,1775) (Kemalpaşa/Kamberler, 08.06.2008. Photo: Kurtuluş Şimşek).



Fig. 61/a – *Lycaena tityrus* (Poda,1761) (Kemalpaşa/Yiğitler, 02.06.2007. Photo: Ali Atahan).



Fig. 61/b – *Lycaena tityrus* (Poda,1761) (male) (Kemalpaşa/Yiğitler, 16.04.2008. Photo: Kurtuluş Şimşek).



Fig. 61/c – *Lycaena tityrus* (Poda,1761) (female) (Kemalpaşa/Yiğitler, 16.04.2008. Photo: Kurtuluş Şimşek).



Fig. 62/a – *Lycaena thersamon* (Esper,[1784]) (female) (İnciraltı, 25.10.2006. Photo: Ali Atahan).



Fig. 62/b – *Lycaena thersamon* (Esper,[1784]) (Kemalpaşa/Aşağıkızılca, 10.11.2007. Photo: Kurtuluş Şimşek).



Fig. 62/c – *Lycaena thersamon* (Esper,[1784]) (male) (Kemalpaşa/Aşağıkızılca, 10.11.2007. Photo: Kurtuluş Şimşek).



Fig. 62/d – *Lycaena thersamon* (Esper,[1784]) (male) (Kemalpaşa/Nazarköy(Kurudere), 19.04.2008. Photo: Munir Hançer).



Fig. 63/a – *Lycaena phlaeas* (Linnaeus,1761) (Balçova, 05.08.2006. Photo: Demet Çelikkaya).



Fig. 63/b – *Lycaena phlaeas* (Linnaeus,1761) (Kemalpaşa/Yiğitler, 19.04.2008;. Photo: Vildan Bozacı).



Fig. 64/a – *Plebejus modicus* Verity, 1935 (Bozdağ, 27.07.2008. Photo: Vildan Bozacı).



Fig. 64/b – *Plebejus modicus* Verity, 1935 (Bozdağ, 27.07.2008. Photo: Vildan Bozacı).



Fig. 65/a – *Polyommatus agestis* ([Denis & Schiffermüller], 1775) (Buca/Kaynaklar, 16.09.2006. Photo: Ali Atahan).



Fig. 65/b – *Polyommatus agestis* ([Denis & Schiffermüller], 1775) (Buca/Kaynaklar, 13.05.2007. Photo: Orhan Gül).



Fig. 65/c – *Polyommatus agestis* ([Denis & Schiffermüller],1775) (Balçova, 08.03.2008. Photo: Vildan Bozacı).

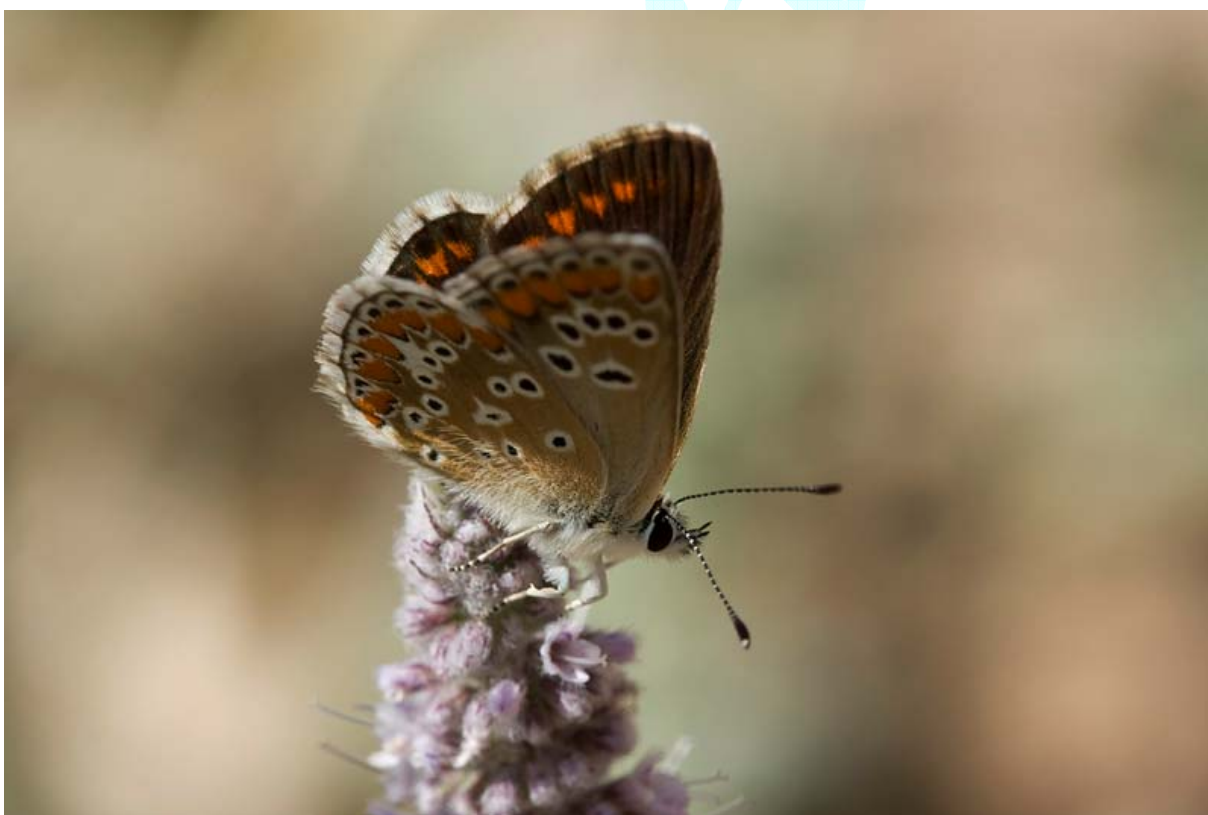


Fig. 65/d – *Polyommatus artaxerxes* (Fabricius,1793) (Bozdağ 1600m, 27.07.2008. Photo: Vildan Bozacı).



Fig. 66/a – *Polyommatus anteros* (Freyer,[1838]) (Bozdağ, 27.07.2008. Photo: Munir Hançer).



Fig. 67/a – *Polyommatus amandus* (Schneider,1792) (male) (Bozdağ, 03.06.2006. Photo: Ali Atahan).



Fig. 67/b – *Polyommatus amandus* (Schneider,1792) (male) (Kemalpaşa/Yiğitler, 02.06.2007. Photo: Ali Atahan).



Fig. 67/c – *Polyommatus amandus* (Schneider,1792) (male) (Kemalpaşa/Yiğitler, 02.06.2007. Photo: Ali Atahan).



Fig. 67/d – *Polyommatus amandus* (Schneider,1792) (female) (Kemalpaşa/Kamberler, 08.06.2008. Photo: Kurtuluş Şimşek).



Fig. 68/a – *Polyommatus thersites* (Canterer,[1835]) (Kemalpaşa, 01.09.2007. Photo: Vildan Bozacı).



Fig. 69/a – *Polyommatus icarus* (Rottemburg, 1775) (male) (Balçova, 11.06.2005. Photo: Ali Atahan).



Fig. 69/b – *Polyommatus icarus* (Rottemburg, 1775) (Buca/Kaynaklar, 13.05.2007. Photo: Orhan Gül).



Fig. 69/c – *Polyommatus icarus* (Rottemburg, 1775) (female) (Dikili, 31.07.2007. Photo: Vildan Bozacı).



Fig. 69/d – *Polyommatus icarus* (Rottemburg, 1775) (female) (Kemalpaşa/Kurudere, 10.05.2008. Photo: Vildan Bozacı).



Fig. 70/a – *Rubrapterus bavius* (Eversmann,1832) (female) (Buca/Kaynaklar, 06.05.2007. Photo: Ali Atahan).



Fig. 70/b – *Rubrapterus bavius* (Eversmann,1832) (male) (Kemalpaşa/Kurudere, 19.04.2008. Photo: Vildan Bozacı).



Fig. 70/c – *Rubrapteris bavius* (Eversmann,1832) (male) (Kemalpaşa/Kurudere, 19.04.2008. Photo: Vildan Bozacı).



Fig. 71/a – *Pseudophilotes vicrama* (Moore,1865) (Balçova, 20.05.2008. Photo: Munir Hançer).



Fig. 72/a – *Satyrium acaciae* (Fabricius,1787) (Bergama/Akropol, 18.05.2008. Photo: Vildan Bozaci).



Fig. 73/a – *Satyrium ilicis* (Esper,[1779]) (Karaburun, 19.05.2005. Photo: Ali Atahan).



Fig. 73/b – *Satyrium ilicis* (Esper,[1779]) (Kemalpaşa/Dereköy, 18.05.2008. Photo: Kurtuluş Şimşek).



Fig. 73/c – *Satyrium ilicis* (Esper,[1779]) (Balçova 12.05.2007. Photo: Vildan Bozacı).



Fig. 73/d – *Satyrium ilicis* (Esper,[1779]) (Buca/Kaynakalar, 13.05.2007. Photo: Orhan Gül).

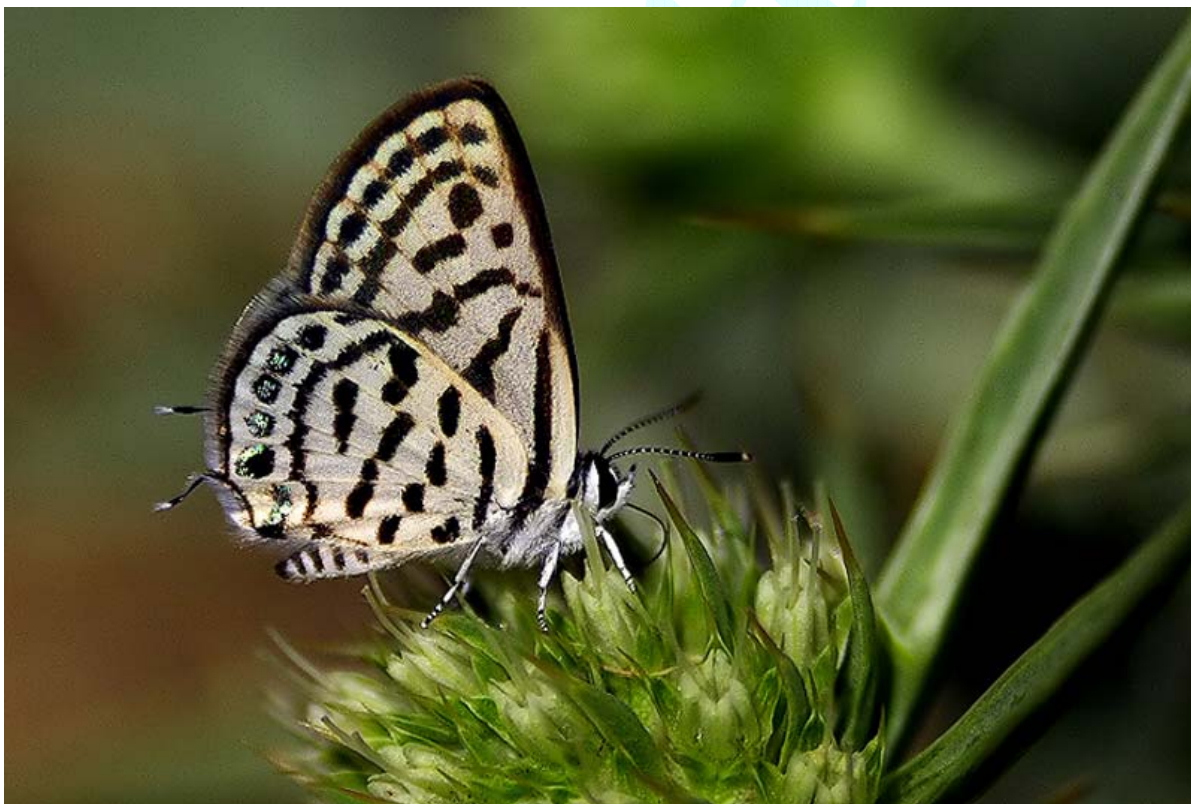


Fig. 74/a – *Tarucus balkanicus* (Freyer,[1843]) (Buca/Kaynaklar, 05.08.2006. Photo: Ali Atahan).



Fig. 74/b – *Tarucus balkanicus* (Freyer,[1843]) (Kemalpaşa/Kurudere, 10.05.2008. Photo: Demet Çelikkaya).

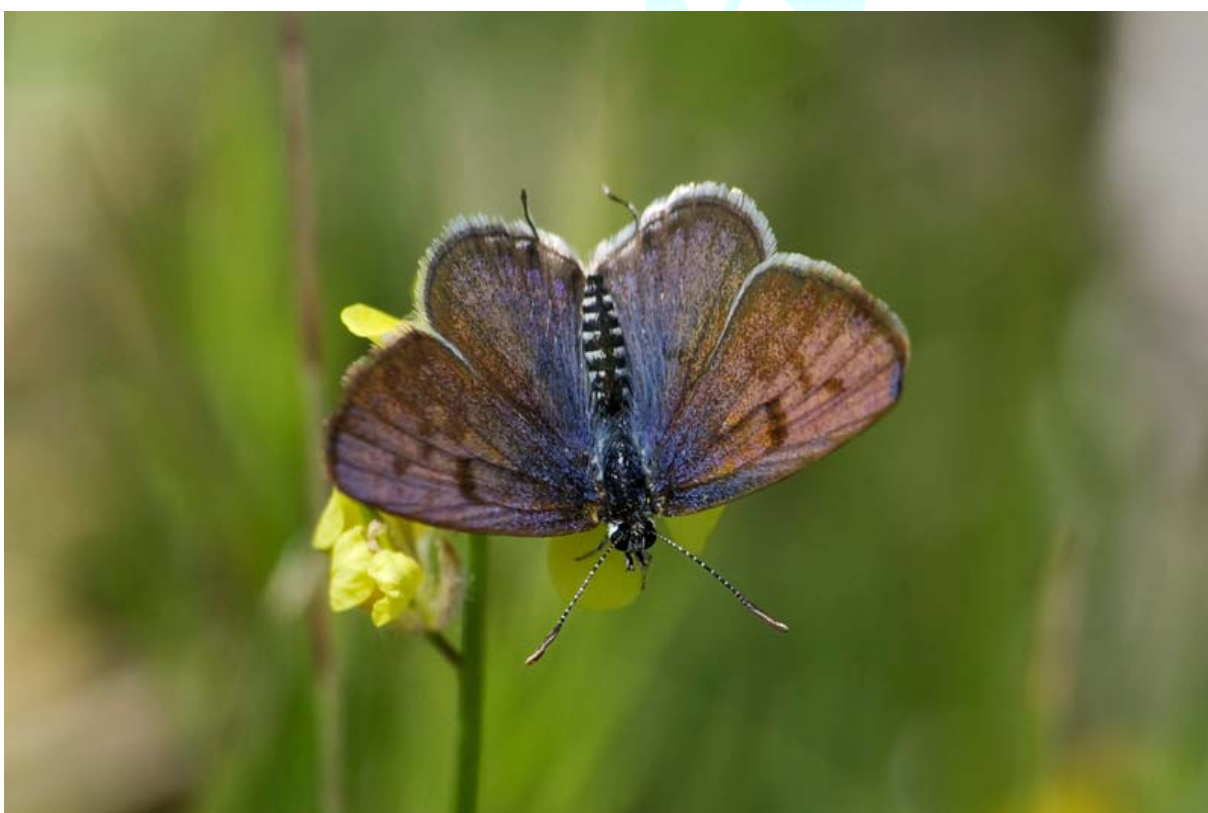


Fig. 74/c – *Tarucus balkanicus* (Freyer,[1843]) (Kemalpaşa/Kurudere, 10.05.2008. Photo: Munir Hançer).



Fig. 75/a – *Carcharodus orientalis* Staudinger, 1901 (Buca/Kaynaklar, 16.09.2006. Photo: Ali Atahan).

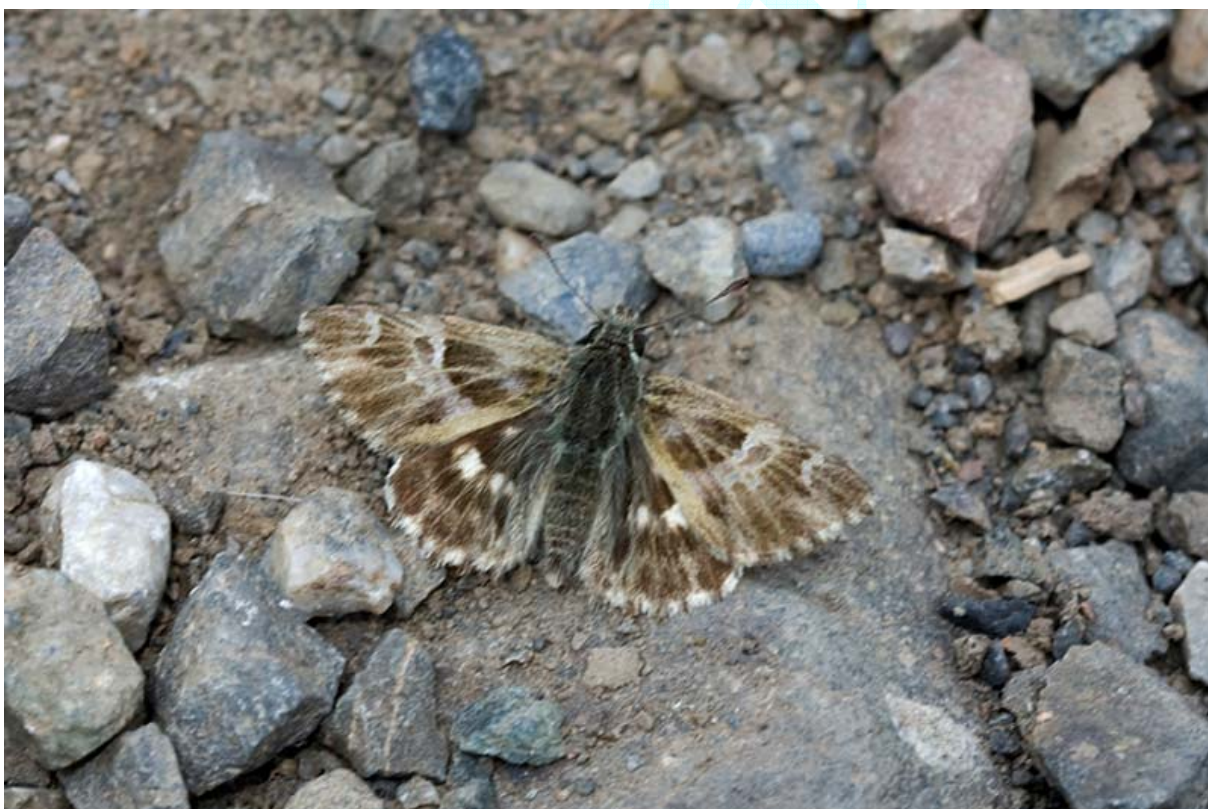


Fig. 75/b – *Carcharodus orientalis* Staudinger, 1901 (Kemalpaşa/Kurudere, 10.05.2008. Photo: Vildan Bozacı).



Fig. 75/c – *Carcharodus orientalis* Staudinger, 1901 (Kemalpaşa/Kurudere, 10.05.2008. Photo: Vildan Bozacı).



Fig. 76/a – *Carcharodus alceae* (Esper,[1780]) (Buca/Kaynaklar, 21.04.2007. Photo: Ali Atahan).



Fig. 76/b – *Carcharodus alceae* (Esper,[1780]) (Kemalpaşa/Aşağıkızılca, 11.10.2007. Photo: Kurtuluş Şimşek).



Fig. 76/c – *Carcharodus alceae* (Esper,[1780]) (Balçova, 29.03.2008. Photo: Vildan Bozacı).



Fig. 76/d – *Carcharodus alceae* (Esper,[1780]) (Kemalpaşa/Kurudere, 18.05.2008. Photo: Munir Hançer).



Fig. 77/a – *Erynnis marloji* (Boisduval,[1834]) (Buca/Kaynaklar, 05.08.2006. Photo: Ali Atahan).



Fig. 77/b – *Erynnis marloyi* (Boisduval,[1834]) (Kemalpaşa/Nazarköy(Kurudere), 18.05.2008. Photo: Munir Hançer).



Fig. 77/c – *Erynnis marloyi* (Boisduval,[1834]) (Kemalpaşa/Nazarköy(Kurudere), 18.05.2008. Photo: Kurtuluş Şimşek).



Fig. 78/a – *Gegenes pumilio* (Hoffmannsegg,1804) (Buca/Kaynaklar, 18.08.2007. Photo: Ali Atahan).



Fig. 78/b – *Gegenes pumilio* (Hoffmannsegg,1804) (Balçova, 21.06.2007. Photo: Vildan Bozacı).



Fig. 78/c – *Gegenes pumilio* (Hoffmannsegg,1804) (male) (Urla, 03.11.2007. Photo: Vildan Bozaci).



Fig. 78/d – *Gegenes pumilio* (Hoffmannsegg,1804) (female) (Urla, 03.11.2007. Photo: Vildan Bozaci).



Fig. 78/e – *Gegenes pumilio* (Hoffmannsegg,1804) (female) (Urla, 03.11.2007. Photo: Vildan Bozacı).



Fig. 78/f – *Gegenes pumilio* (Hoffmannsegg,1804) (female) (Kemalpaşa/Bayramlı, 09.07.2008. Photo: Kurtuluş Şimşek).



Fig. 78/g – *Gegenes pumilio* (Hoffmannsegg,1804) (male) (Kemalpaşa/Kurudere, 14.09.2008. Photo: Vildan Bozacı).



Fig. 78/h – *Gegenes pumilio* (Hoffmannsegg,1804) (Çeşme/Alaçatı, 29.10.2008. Photo: Vildan Bozacı).



Fig. 79/a – *Ochloides venatus* (Bremer & Grey,[1852]) (Kemalpaşa/Yiğitler, 01.06.2008. Photo: Kurtuluş Şimşek).



Fig. 79/b – *Ochloides venatus* (Bremer & Grey,[1852]) (Kemalpaşa/Yiğitler, 01.06.2008. Photo: Kurtuluş Şimşek).



Fig. 80/a – *Pelopidas thrax* (Hübner,[1821]) (female) (Balçova, 18.10.2008. Photo: Munir Hançer).



Fig. 80/b *Pelopidas thrax* (Hübner,[1821]) (female) (Balçova, 18.10.2008. Photo: Munir Hançer).



Fig. 80/c – *Pelopidas thrax* (Hübner,[1821]) (Balçova, 09.09.2007. Photo: Munir Hançer).

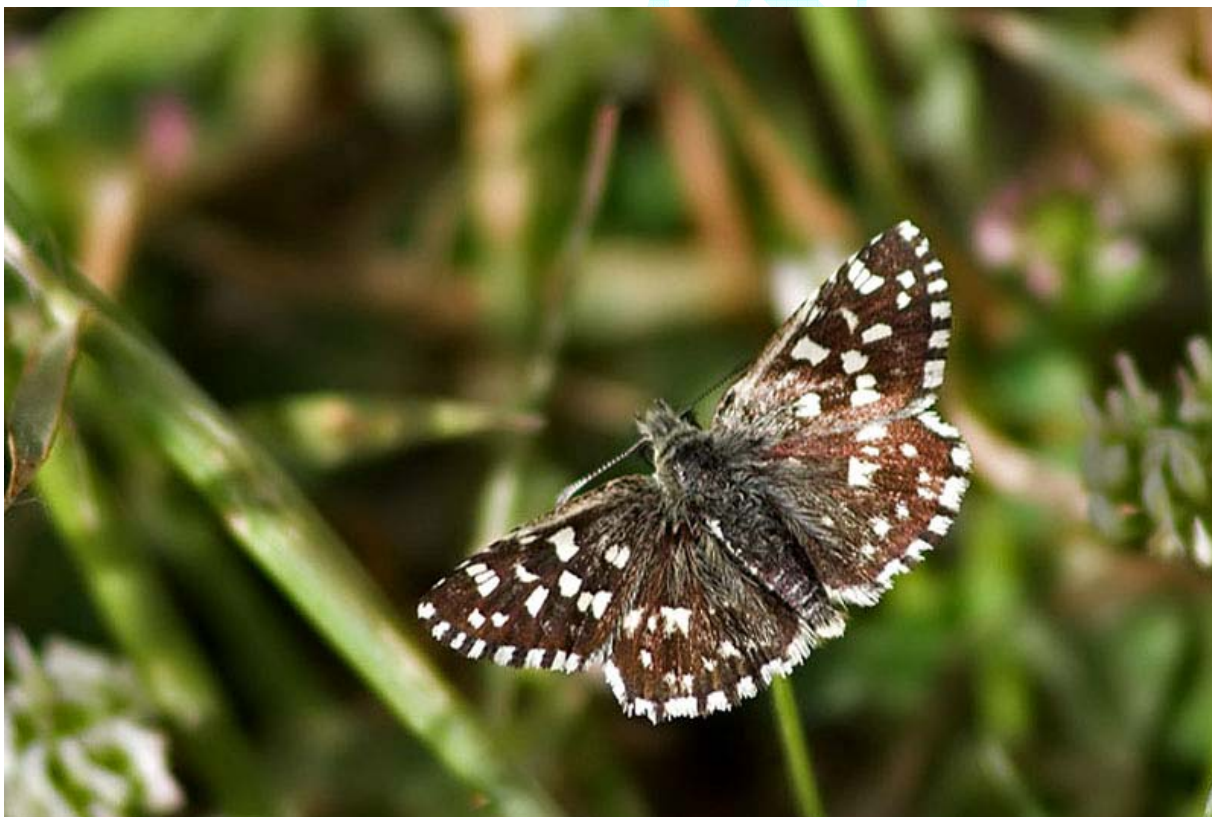


Fig. 81/a – *Pyrgus melotis* (Duponchel,[1834]) (Bozdağ, 03.06.2006. Photo: Ali Atahan).



Fig. 81/b – *Pyrgus melotis* (Duponchel,[1834]) (Kemalpaşa/Nazarköy (Kurudere), 19.04.2008. Photo: Vildan Bozacı).

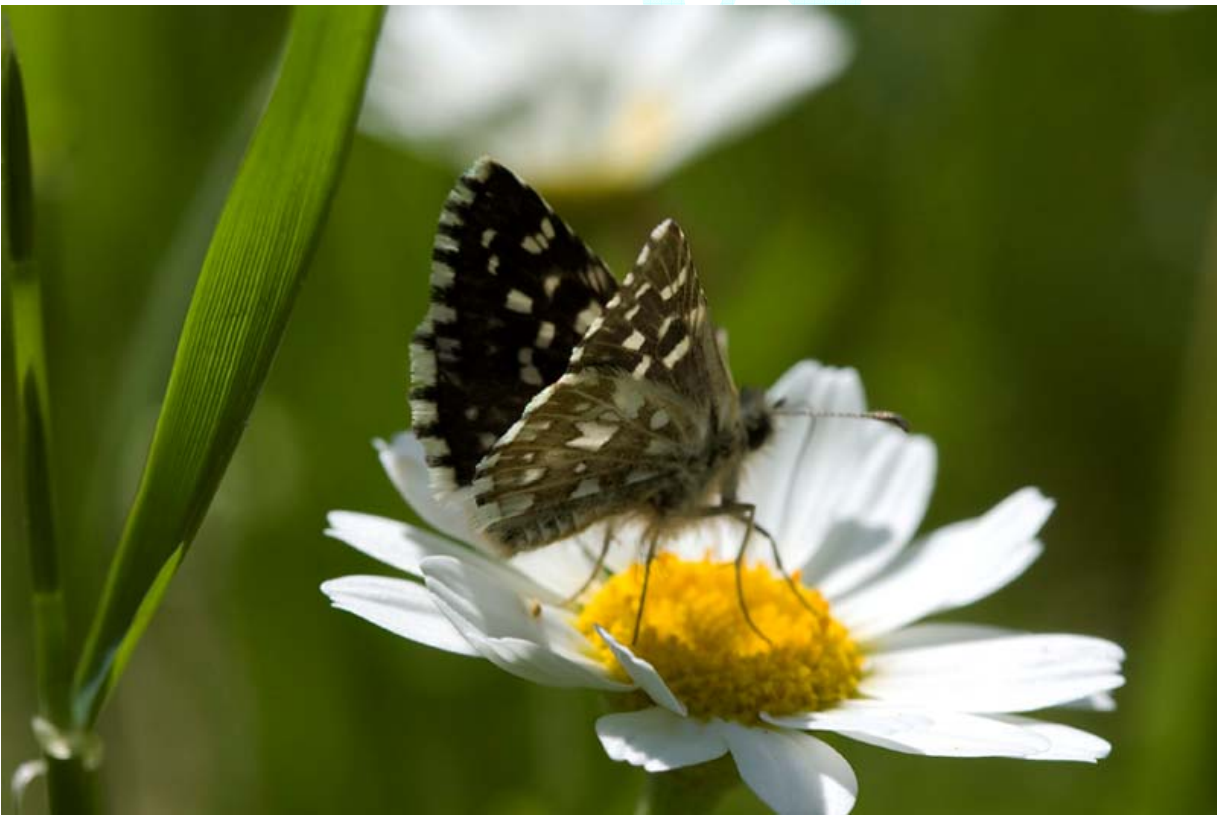


Fig. 81/c – *Pyrgus melotis* (Duponchel,[1834]) (Kemalpaşa/Nazarköy (Kurudere), 19.04.2008. Photo: Vildan Bozacı).



Fig. 81/d – *Pyrgus melotis* (Duponchel,[1834]) (Kemalpaşa/Nazarköy (Kurudere), 03.05.2008. Photo: Munir Hançer).



Fig. 82/a – *Pyrgus sidae* (Esper,[1784]) (Kemalpaşa/Nazarköy (Kurudere), 18.05.2008. Photo: Munir Hançer).



Fig. 82/b - *Pyrgus sidae* (Esper,[1784]) (Kemalpaşa/Nazarköy (Kurudere), 10.05.2008. Photo: Munir Hançer).



Fig. 83/a - *Spialia orbifer* (Hübner,[1823]) (Çiğli/Gediz Deltası, 28.05.2006. Photo: Ali Atahan).



Fig. 83/b – *Spialia orbifer* (Hübner,[1823]) (Menderes/Efemçukuru, 10.08.2006. Photo: Demet Çelikkaya).



Fig. 83/c – *Spialia orbifer* (Hübner,[1823]) (Kemalpaşa/Kamberler, 01.06.2008. Photo: Kurtuluş Şimşek).



Fig. 84/a – *Thymelicus sylvestris* (Poda,1761) (Balçova, 15.05.2005. Photo: Ali Atahan).

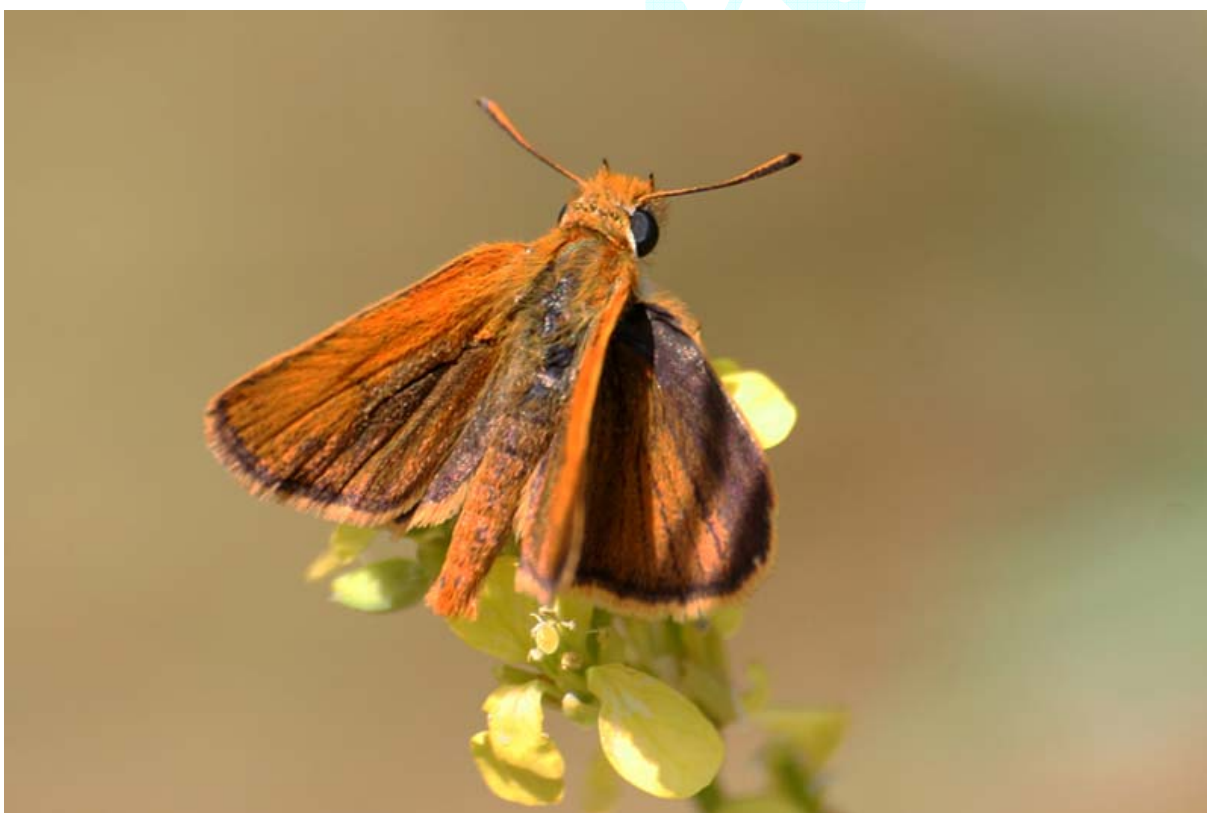


Fig. 84/b – *Thymelicus sylvestris* (Poda,1761) (Balçova, 20.05.2007. Photo: Vildan Bozacı).



Fig. 84/c – *Thymelicus sylvestris* (Poda,1761) (Kemalpaşa/Aşağıkızılca, 17.05.2008. Photo: Kurtuluş Şimşek).



Fig. 84/d – *Thymelicus sylvestris* (Poda,1761) (Kemalpaşa/Kurudere, 10.05.2008. Photo: Demet Çelikkaya).



Fig. 84/e – *Thymelicus sylvestris* (Poda,1761) (Balçova, 17.05.2008. Photo: Munir Hançer).

Cesa

Announcements

Recent Cesa Publications

Koçak,A.Ö. & M.Kemal, 2009,

Third Report on the Temporary Results of the Lepidopteran List of Africa Continent based upon the Info-system of the Cesa stand 1. 3. 2009. *Cesa Publ. African Lepid.* 25: 1-2810, figs. maps.

This third faunal report on the Lepidoptera of Africa is solely based upon the information of Databank of the Cesa. The comprehensive updated results are reported herewith for the first time. Totally 23261 valid taxa of the species group, living in Africa, are mentioned with valid scientific names, chronologically arranged synonyms and homonyms. Number of the Lepidopteran species recorded in 53 states (or countries) in the Continent Africa are given with previous published information. These are as follows: Algeria [DZ] (1624); Angola [AO] (1119); Benin [BJ] (0122); Botswana [BW] (0382); Burkino-Faso (Upper Volta) [BF] (0119); Burundi [BI] (0287); Cameroon [CM] (2459); Canary Islands [Cn] (0410); Cape de Verde [CV] (0022); Central African Republic [CF] (0447); Congo [CG] (0812); Comoros [KM] (0194); Djibouti [DJ] (0123); Egypt [EG] (0696); Equatorial Guinea [GO] (0406); Eritrea [ER] (0205); Ethiopia [ET] (1281); Gabon [GA] (1012); Ghana [GH] (0830); Gambia [GM] (0169); Guinea [GN] (0432); Ivory Coast [CI] (0770); Kenya [KE] (2551); Leshoto [LS] (0159); Liberia [LR] (0413); Libya [LY] (0591); Madagascar [MG] (1500); Malawi [MW] (1107); Mali [ML] (0097); Marocco [MA] (1511); Mauretania [MR] (0187); Mauritius [MU] (0136); Mozambique [MZ] (0977); Namibia [NA] (0532); Niger [NE] (0155); Nigeria [NG] (1709); Reunion [RE] (0099); Rwanda [RW] (0474); Sao Tome [ST] (0204); Senegal [SN] (0388); Sierra Leone [SL] (1044); Sokotra [Sk] (0131); Somalia [SO] (0472); South Africa [ZA] (8474); Sudan [SD] (0839); Swaziland [SZ] (0181); Tanzania [TZ] (2517); Tschad [TD] (0139); Togo [TG] (0259); Tunis [TN] (0985); Uganda [UG] (2497); Zaire [ZR] (3548); Zambia [ZM] (0929); Zimbabwe [ZW] (1648). Besides, the regional faunal lists are also indexed as valid species group taxa. These are as follows: Lepidoptera of Northern Africa, with the 2954 valid species group taxa, Lepidoptera of Western Africa (from Senegal to Cameroon) with the 4544 valid species group taxa, Lepidoptera of Eastern Africa, with the 5376 valid species group taxa, Lepidoptera of African Horn, with the 1578 valid species group taxa, and Lepidoptera of Southern Africa, with the 12879 valid species group taxa. Finally, the valid species group taxa of the Lepidoptera of Africa continent, including Madagascar, Reunion, Comoros, and Mauritius, are indexed as 23261.

http://www.metafro.be/Members/Cesa/Cesapublafri25.pdf/base_view

Koçak,A.Ö. & M.Kemal, 2009,

Report of the Project “*Lepidoptera* of Indo-China (LIC)” 1- Temporary index of the species group names of the *Lepidoptera*. *Cent. ent. Stud., Priamus Suppl.* 16: 1-330, 81 figs [March 7, 2009]

In this publication, totally 11474 valid species group names of *Lepidoptera* recorded in Indo-China (Myanmar, Andaman Islands, Thailand, Laos, Cambodia, Malaysia, Yunnan, Hainan, Malaysia, Singapore, Borneo) based upon the Info-system of the Cesa are listed alphabetically. Synonym names arranged chronologically are given to each taxa.

<http://www.archive.org/details/CentreForEntomologicalStudiesAnkaraPriamusSupplement161-330>

Kemal,M., 2009,

Observations on the Himalayan Striped Squirrel at Chiang Mai (North Thailand) [March 10, 2009].

A documentary film entitled Observations on the Himalayan Striped Squirrel (*Tamiops maclellandi*) at Chiang Mai (North Thailand) (Rodentia, Sciuridae). 4min 32 sec. mpeg2 file

<http://www.archive.org/details/ObservationsOnTheHimalayanStripedSquirrelAtChiangMainorthThailand>



Centre for Entomological Studies Ankara

(A scientific Consortium)

(co-operation of research workers for pure-scientific, not commercial purpose)

Web Page of the Cesa: <http://www.cesa-tr.org/>

Scientific Serials: Priamus & Supplement (ISSN 1015-8243)²⁴, Miscellaneous Papers (ISSN 1015-8235)²⁵, Memoirs (ISSN-8227)²⁶ DVD Films²⁷, Iconographia Insectorum²⁸ Cesa Publications on African Lepidoptera (series)²⁹, Cesa News [online]³⁰, Cesa Books³¹

Owners / Sahipleri - Editors / Yayıncılar: Prof. Dr. Ahmet Ömer Koçak (c/o Yüzüncü Yıl University, Turkey) - Editor Assistant: Asst. Prof. Dr. Muhabbet Kemal Koçak (c/o Yüzüncü Yıl University, Turkey).

Editorial Board of all Scientific Serials / Bütün Bilimsel Yayınların Yayın Kurulu: Insecta, taxonomy, nomenclature, ecology, faunistics: Prof. Dr. Ahmet Ömer Koçak (Yüzüncü Yıl Üniversitesi, Turkey), Asst. Prof. Dr. Muhabbet Kemal Koçak (Yüzüncü Yıl University, Turkey), Asst. Prof. Dr. Selma Seven (Gazi University, Turkey), General Entomology: Assoc. Prof. Dr. Paitoon Leksawasdi (Chiang Mai University, Faculty of Science, Thailand); Homoptera: Dr. Emine Demir (Turkey). Orthoptera: Dr. Piotr Naskrečki (Connecticut University, U.S.A.), Assoc. Prof. Dr. Mustafa Ünal (Abant İzzet Baysal University, Turkey), Asst. Prof. Dr. Yusuf Hüseyinoğlu (Mersin University, Turkey), Asst. Prof. Dr. Yaşar Gülmez (Gazi Osman Paşa University, Tokat). Coleoptera / Chrysomelidae: Assoc. Prof. M.S.Mohammedsaid (Malaysia). - Plant taxonomy, flora and vegetation: Prof. Dr. Lütfi Behçet, Asst. Prof. Dr. Fevzi Özgökçe, Asst. Prof. Dr. Mural Ünal (Yüzüncü Yıl University, Van, Turkey).

ALL RIGHTS RESERVED

Correspondences should be addressed to: Prof. Dr. Ahmet Ömer Koçak, c/o Yüzüncü Yıl University, Fen-Edebiyat Fakültesi, Biyoloji Bölümü, Kampus, Van / Turkey. - e-mails: cesa_tr@yahoo.com.tr - a_kocak@lycos.com

All serials are recorded regularly by the Zoological Record,
Thomson Reuters, Enterprise House, Innovation Way, Heslington, York, YO10 5NY, United Kingdom
ts-emea-york.dcsadmins@thomson.com

²⁴ <http://www.cesa-tr.org/Pri.htm> - pdf available after corresponding

²⁵ <http://www.cesa-tr.org/Miscell.htm> - pdf available after corresponding

²⁶ <http://www.cesa-tr.org/Memoirs.htm> -

²⁷ <http://www.cesa-tr.org/CDF.htm>

²⁸ <http://www.cesa-tr.org/Icon.htm>

²⁹ http://www.metafro.be/Members/Cesa/internet_sayfas305/base_view - pdf available

³⁰ <http://www.cesa-tr.org/Cesanews.htm>

³¹ <http://www.cesa-tr.org/Cesabooks.htm>